

**436-2300 Mansfield Drive**  
 Panoramic Mainland Mountain and Waterfront Views  
**\$399,900**  
 MLS 442930



Area	Courtenay
Bedrooms	2
Bathrooms	2
Ensuite	Yes
Floor Space	1211 sq ft
Age	Built in 2008
Parking	Underground
Taxes	\$ 2,264 (18)
Storage Locker	Yes

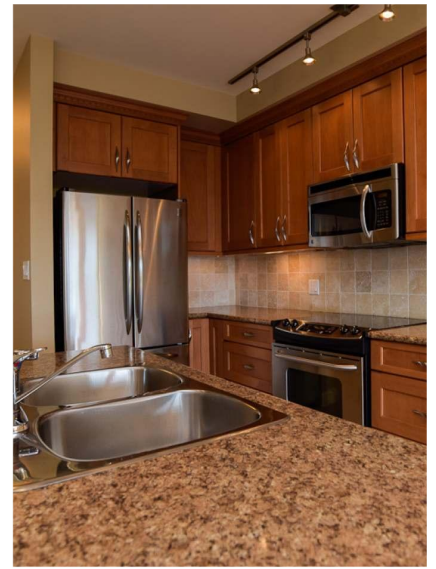
Enjoy gorgeous views from this bright Trumpeters Landing condo.  
 High quality features and finishes, easy access to the Courtenay River walkway system, steps to the waterfront, shopping and downtown Courtenay, pleasing and modern Architectural design with timber frame accents and beautiful landscaping make this condominium project second to none in the Comox Valley.



**BrianWillis.ca**  
 Personal Real Estate Corporation

brian@brianwillis.ca  
 T: 250.334.9900 C: 250.218.6789  
 Toll Free: 1 877.216.5171  
 2230 Cliffe Ave. Courtenay, BC V9N 2L4





## 436-2300 Mansfield Drive

The open concept layout with eating bar kitchen is perfect for entertaining and just enjoying. This unit has both a private patio off the master and 2nd bedroom, plus a balcony with both Ocean and Beaufort Mountains views. The Trumpeters Landing development has all the modern features, bright interiors with over height windows and doors, exceptional welcoming entrances with beautiful landscaping, security entrances, gated under building parking, secure storage lockers and much, much more.

For more information and to view, contact Brian Willis at 250-218-6789 or email [brian@brianwillis.ca](mailto:brian@brianwillis.ca).

Additional information and photo's and floor plans can be viewed at [www.brianwillis.ca](http://www.brianwillis.ca)



**BrianWillis.ca**  
Personal Real Estate Corporation

[brian@brianwillis.ca](mailto:brian@brianwillis.ca)  
T: 250.334.9900 C: 250.218.6789  
Toll Free: 1 877.216.5171  
2230 Cliffe Ave. Courtenay, BC V9N 2L4

