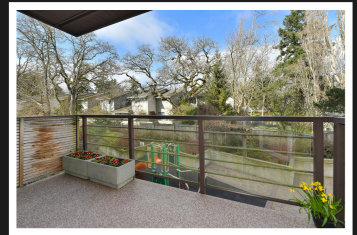
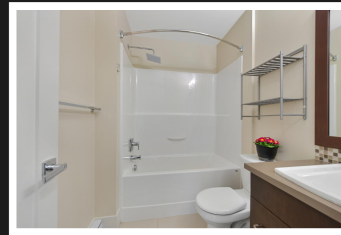
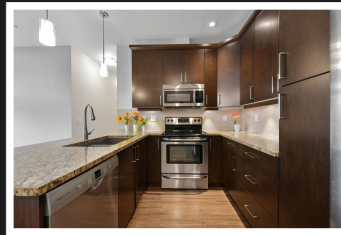


PEMBERTON  
HOLMES

· ESTABLISHED 1887 ·

# FANTASTIC UPPER-QUADRA CONDO

#206-982 McKenzie Ave



## 2 Bedrooms, 2 Full-Bathrooms, On the Quiet Side of the Building!

Fantastic condo with 9ft ceilings on the quiet side of a boutique building overlooking tranquil gardens. This corner suite is bright, spacious and has neighbours on only 1 side, plus the 2 bedrooms are separated offering additional privacy. Quality is built-in with granite countertops, laminate wood floors, a huge walk-in closet in the primary bedroom, a gorgeous window feature surrounding the living room fireplace and a unique design feature of windows above all the interior doors. The well-planned kitchen has stainless steel appliances and a breakfast bar. This well managed building has a bike room, extra visitor parking, underground secure parking, community garden plots, and hot water that's included in the strata fees. **BONUS:** 2 pets allowed, any size! Great location: 1 block to Thrifty Foods & London Drugs, very close to Lochside/Galloping Goose bike trail, Swan Lake Nature Sanctuary, Christmas Hill hiking trails, and on main bus route to UVic & downtown



Priced at  
**\$599,000**

Area	Quadra	Age	2012
Bedrooms	2	Taxes	\$2498
Bathrooms	2	Tax Year	2023
Strata Fees	\$442/mo	MLS#	954683
Floor Space	879sf	Parking	Secure UndGr

**NICOLE BURGESS**

Pemberton Holmes - Cloverdale

Scan this QR  
Code with your  
smart phone



(250) 384-8124  
nicole@nicoleburgess.com

150-805 Cloverdale Ave  
Victoria, V8X 2S9