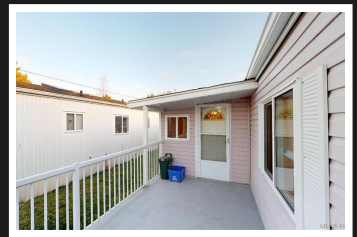
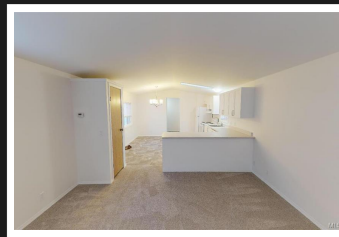
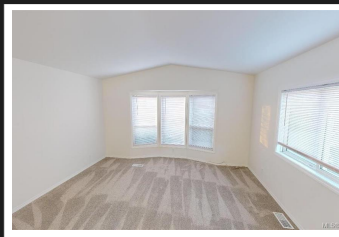


PEMBERTON
HOLMES

· ESTABLISHED 1887 ·

"THE BOULDERS HOME PARK"

2-1581 Middle Rd

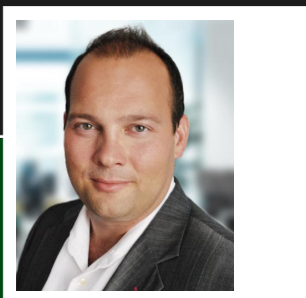


2-1581 Middle Rd

AVAILABLE IMMEDIATELY. Pad fee only \$425 per month. Brand new kitchen, including cabinets, counters and all appliances. This home has a large addition so it lives more like a double-wide home than a single wide. This 4 bedroom home is located in "Boulders Manufactured Home Park" where kids are welcome and pets are allowed with park approval. This home offers many creature comforts, including a dishwasher, washer and dryer, a built in computer nook, a large deck and a fenced yard for the kids and dog to play- plus parking for two vehicles. The kitchen and living room are fully updated with brand new everything and the carpet is new throughout. There is some minor updates to do, like installing some missing baseboards and closet doors, the odd wall to patch and some painting....which is why the home has been priced at a discount. VIRTUAL TOUR, FLOOR PLANS AVAILABLE. BONUS.... Great Tenancy Agreement! Ask your Realtor for DETAILS!

Priced at
\$149,000

Area	Glentana	Age	1992
Bedrooms	4	Taxes	800
Bathrooms	1	Tax Year	2019
Lot Size	0.06	MLS#	419217
Floor Space	1117	Parking	Driveway



JEFF MARTENS PREC
Pemberton Holmes - Cloverdale

Scan this QR
Code with your
smart phone



(250) 384-8124
jeff@jeffmartens.ca
www.jeffmartens.ca

150 - 805 Cloverdale Ave
Victoria, V8X 2S9