



450 Matheson Road

\$3,999,000



Possibly the last LARGE 200 acre piece of land available on the eastside of Skaha Lake. Views from here are magnificent! It's as if you're looking down on the Okanagan Valley right from heaven. This custom built/ designed by German architect 7,000 sq ft villa offers a dramatic luxury lifestyle. It is supported by a combination of architectural elements such as wood post/beam design, spectacular indoor pool where exterior walls are all accordion style doors to enjoy the fresh air which lingers at that elevation. Sunrooms, patios, custom crafted outdoor fireplace and pizza oven, softened by lavish foliage on the immaculate kept grounds, provide delightful tranquility and complete privacy. This architectural estate is beyond compare and one-of-a-kind. Entertain your guests and send them to their own guest house. Private lake, pastures, horse barns and an endless amount of space to call this your personal and private playground. Strictly by appointment only!

Area	KO Eastside/Lkshr/ Skaha Est	Age	1982
Bedrooms	3	Taxes	\$6023
Bathrooms	4	Tax Year	2017
Lot Size	198.8 acre	MLS#	171698
Floor Space	6800 sf	Parking	6 Spaces, Double Garage, RV Parking



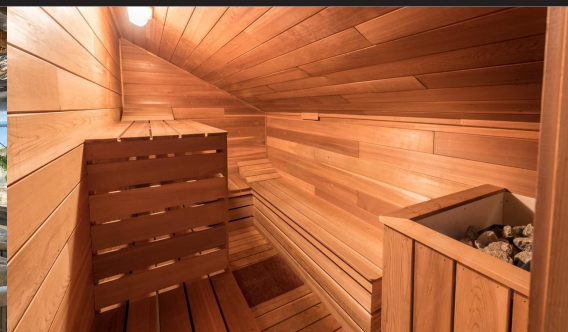
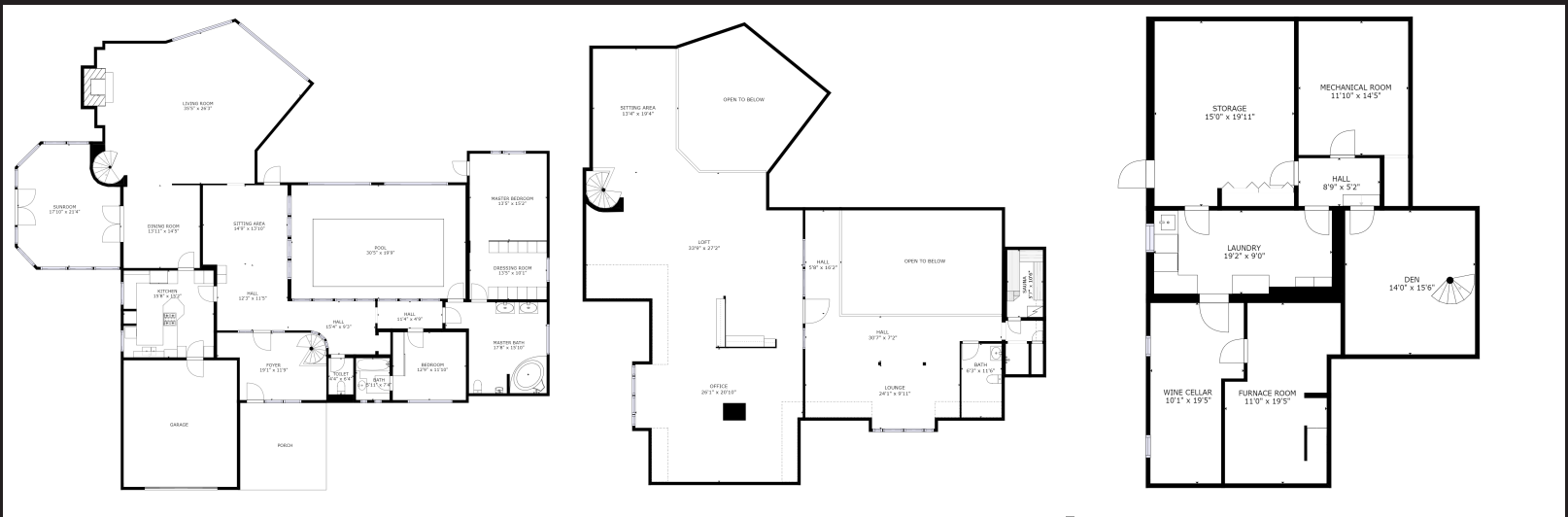
To view online scan this QR code with your smart phone



Sergej Sinicin
RE/MAX PENTICTON REALTY - DT

(778) 476-7778
#104 - 399 Main Street
sergej@cpg.email
www.chamberlainpropertygroup.ca

450 Matheson Road



Sergej Sinicin
RE/MAX PENTICTON REALTY - DT

(778) 476-7778
#104 - 399 Main Street
sergej@cpg.email
www.chamberlainpropertygroup.ca

