



DFH
REAL ESTATE LTD.

Be sold on expertise.

Leading REAL ESTATE
COMPANIES
OF THE WORLD®



302-1090 Johnson St

\$525,000

ATTENTION... SOUTH FACING 2 BED 2 BATH 806 sqft condo WITH BONUS ***548 SQFT WRAP AROUND DECK*** VERY RARE to have such a huge deck for a condo! What value to have more than half your living space outside! Great location at the corner of Johnson and Cook! The Mondrian, by Alpha Developments, one of Victoria's premiere builders, is convenient to all your downtown living! Built in 2013. Features include quartz countertops, Italian cabinets with soft-close drawers, plank Laminate, under-mount sinks, in-suite laundry, high efficiency toilets, separate storage and shared bike storage. BBQ's allowed, unrestricted rentals, full-time resident caretaker and does include one secured parking stall. Do not miss this unique condo!



Jeff Bishop*

T: (250) 477-7291

F: (250) 477-3161

jeff@jeffreycbishop.com www.jeffreycbishop.com

3914 Shelbourne St

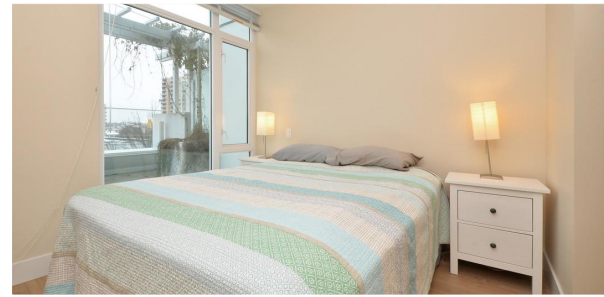
Victoria, BC V8P 4J1



DFH
REAL ESTATE LTD.

Be sold on expertise.

Leading REAL ESTATE
COMPANIES
OF THE WORLD®



SPECIFICATIONS

Area	Downtown
Bedrooms	2
Bathrooms	2
Lot Size	0.03
Floor Space	806
Age	2013
Taxes	2386
Tax Year	2016
MLS#	373939
Parking	1 Space, Garage Single



To view interactive floor plans scan this QR code with your smart phone



Jeff Bishop*

T: (250) 477-7291
F: (250) 477-3161

jeff@jeffreycbishop.com www.jeffreycbishop.com
3914 Shelbourne St
Victoria, BC V8P 4J1