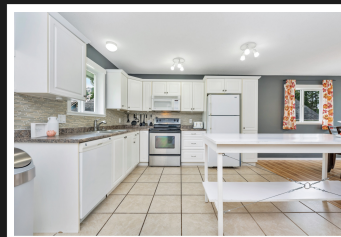


PEMBERTON
HOLMES

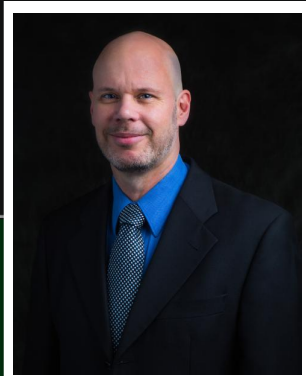
· ESTABLISHED 1887 ·

FAMILY HOME IN THE PROPERTIES AT MAPLE BAY 1565 Nimpkish Pl



1565 Nimpkish Pl

One of the premier neighborhoods in all of the Cowichan Valley, this 3-bedroom, 3 bath home is nestled in The Properties, close to Maple Bay. Open concept, light, bright, and spacious, this home is perfect for a family, and just around the corner from an elementary school, tennis courts, and playground. This two-level home has a living room, kitchen, and primary bedroom upstairs, while downstairs are 2 bedrooms and a rec room or possible forth bedroom. Modern touches such as vaulted ceilings in the living room, white raised panel molding on feature walls, and laminate and tile floors throughout most of the rooms, elevate the value and beauty of this home. Step out onto the back deck, and relax in the fenced yard, and enjoy the beauty of the mature landscaping. This home is only minutes to the ocean, farmers market, and town. This is a family friendly neighborhood, with some of the island's best walking and mountain biking trails just minutes from your doorstep on Mount Tzouhalem.



Priced at
\$629,000

Area	East Duncan	Age	2008
Bedrooms	3	Taxes	4255
Bathrooms	3	Tax Year	2020
Lot Size	7797	MLS#	877199
Floor Space	2160	Parking	

PAUL TEDRICK

Pemberton Holmes - Duncan

Scan this QR
Code with your
smart phone



(250) 216-6020
paul@paultedrick.ca
www.paultedrick.ca

23 Queens Road
Duncan, V9L 2W1