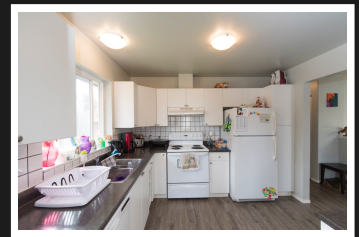
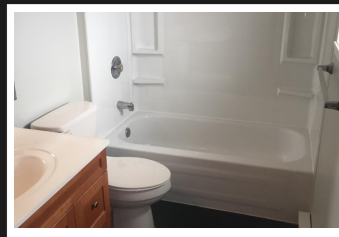
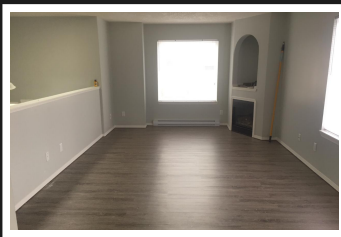


PEMBERTON  
HOLMES

· ESTABLISHED 1887 ·

# HALF DUPLEX WITH IN-LAW SUITE

786 Revilo Place



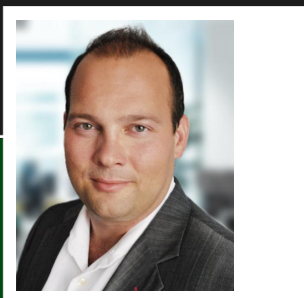
## 786 Revilo Pl

Centrally located on a quiet cul de sac on a 10,000+ sf lot, this 1995 back half of a front-to-back duplex has more space and more yard than the majority of detached homes in Langford. This home features a cathedral entrance, skylights, a spacious kitchen. Recent 2017 upgrades include new, easy maintenance vinyl plank flooring, a fresh modern paint palette and new kitchen counters. There are three bedrooms and two full baths on the upper floor. On the ground floor you'll find a laundry room, an additional bedroom (no closet) and a den. As a bonus, there is an above ground, 2-bedroom in-law suite with 8-foot ceilings and in-suite laundry. Affordable living in the heart of Langford, with a great deck and backyard, walking distance to many services and public transit close by - you can't beat it!

**Priced at**  
**\$599,900**

Area	
Bedrooms	6
Bathrooms	3
Lot Size	10018
Floor Space	2299

Age	1995
Taxes	2283
Tax Year	2018
MLS#	
Parking	3



JEFF MARTENS\*

Pemberton Holmes - Cloverdale

Scan this QR  
Code with your  
smart phone



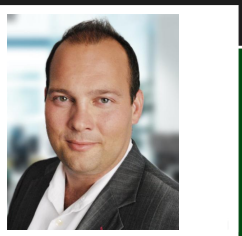
(250) 812-6492  
jeff@jeffmartens.ca  
www.jeffmartens.ca

150 - 805 Cloverdale Ave  
Victoria, V8X 2S9



## In-Law Suite

The pictures on this page are of the 2-bedroom in-law suite with 8-foot ceilings and in-suite laundry. The home is very well designed with the main home enjoying 3 bedrooms and 2 bathrooms on the second floor of the home, plus an additional bedroom, den and laundry on the first floor. The in-law suite has it's own entrance on the main floor and offers a spacious 2 bedroom, 1 bathroom accomodation.



**JEFF MARTENS\***

Pemberton Holmes - Cloverdale

(250) 812-6492  
jeff@jeffmartens.ca  
www.jeffmartens.ca

150 - 805 Cloverdale Ave  
Victoria, V8X 2S9