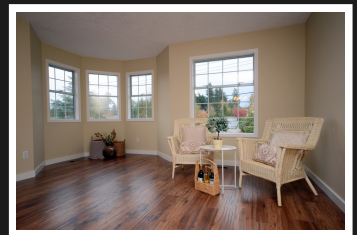


PEMBERTON
HOLMES

· ESTABLISHED 1887 ·

GREAT LOCATION!

720 Mann Ave



3 Bed, 2 Bath

Move in for Christmas! Fully tuned up, neat and tidy, easy care half strata duplex just waiting for you. Three beds, (two up), two baths, large room sizes, off street parking, room to garden, enclosed balcony, NEW flooring, baseboards, tile, counters, full size laundry, built in vac., paint etc.etc. This gem also offers forced air heating and a tremendous central location in Royal Oak close to schools, shopping, restaurants and access to ferries or the airport.

Priced at
\$599,888

Area	Royal Oak
Bedrooms	3
Bathrooms	2
Lot Size	0.09
Floor Space	1926

Age	1992
Taxes	2456
Tax Year	2017
MLS#	385446
Parking	Carport



GARY MCINNIS

Pemberton Holmes - Cloverdale

Scan this QR
Code with your
smart phone



(250) 384-8124
gary@garymcinnis.com
<http://www.garymcinnis.com>

150 - 805 Cloverdale Ave
Victoria, V8X 2S9