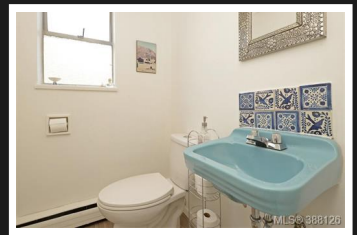
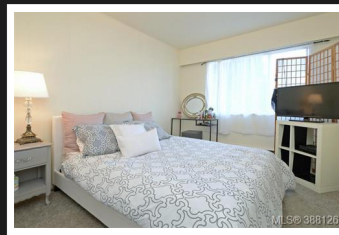
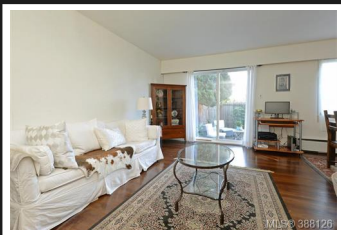


PEMBERTON  
HOLMES

· ESTABLISHED 1887 ·

# WONDERFUL CORNER UNIT

## 3624 Tillicum Rd



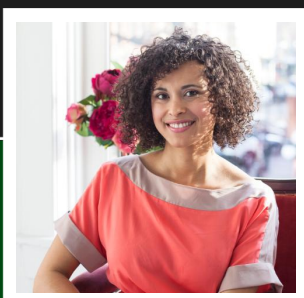
### 3 BEDROOMS, BATHROOMS 2

Enjoy a wonderful sense of community in this children & pet friendly strata. Corner unit in a QUIET location in the complex near the heated outdoor pool & playground. PERFECT FOR SUMMER FUN!! Walk to: Tillicum Mall, schools, trails, bus service to all corners of Greater Vic, & a short drive to Downtown & Uptown! The main level offers a smart layout with a great flow featuring: refinished Oak Floors, fully renovated kitchen with easy close cabinets, pantry, laundry, powder room & tons of storage. An open dining room/living room combination with sliding patio doors leading to a private 25x16 fully fenced yard. BBQ's & outdoor entertaining are a must! Upstairs you will find 3 generous sized bedrooms, a 4 piece bath, & more storage. HEAT, HOT WATER & 1 PARKING SPACE INCLUDED IN THE STRATA FEE +option to rent extra parking based on availability. The perfect place for any family to call home. See our 3D tour & floorplans in the media icon & CALL TODAY TO VIEW!

**Priced at**  
**\$385,000**

Area	Tillicum
Bedrooms	3
Bathrooms	2
Lot Size	0.03
Floor Space	1234

Age	1962
Taxes	1520
Tax Year	2017
MLS#	388126
Parking	1 Space



**PATRICIA KITEKE**

Pemberton Holmes - Cloverdale

Scan this QR  
Code with your  
smart phone



(250) 384-8124  
info@kiteke.ca  
http://kiteke.ca

150 - 805 Cloverdale Ave  
Victoria, V8X 2S9