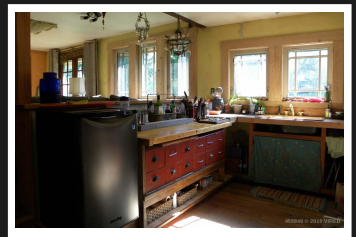
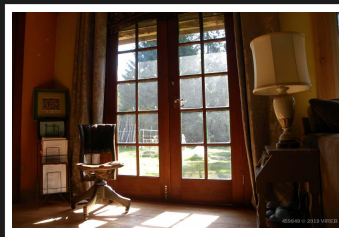
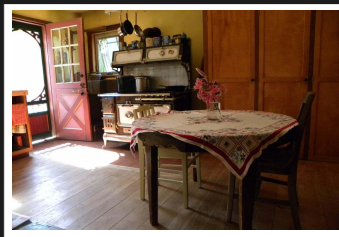


PEMBERTON
HOLMES

· ESTABLISHED 1887 ·

LT A MAIN ROAD

\$437,000



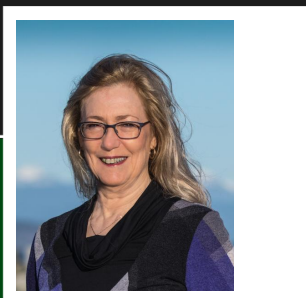
Lt A Main Road, Lasqueti Island

What a gem! A cute, cozy country farmhouse on 10 beautiful acres with arable land, lots of water, full southern exposure & within walking distance to Boat Cove, a sunny south facing pebble beach!

Priced at
\$437,000

Bedrooms 3
Bathrooms 1
Floor Space 1323

Taxes 1627
Tax Year 2019
MLS# 459849



ANNE SPERLING

Pemberton Holmes - Parksville

Scan this QR
Code with your
smart phone



(250) 248-8801
asperling@bcsupernet.com
www.oceansideproperty.ca

135 Alberni Hwy
Parksville, V9P 2G6