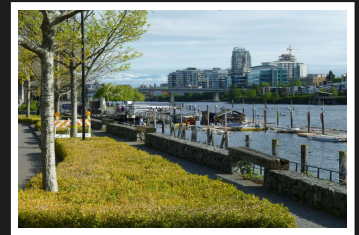
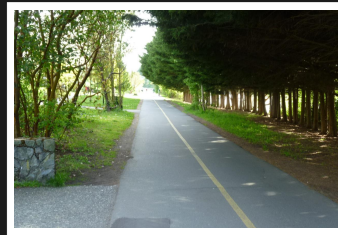
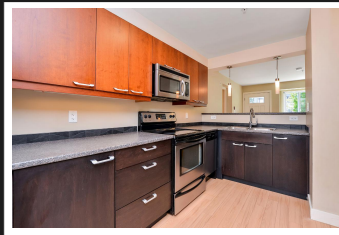
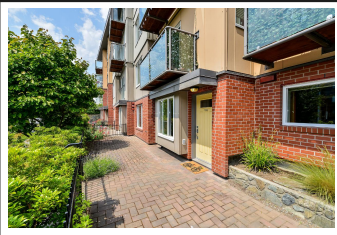


PEMBERTON
HOLMES

· ESTABLISHED 1887 ·

OUTSIDE ENTRY + HUGE PATIO

#104-356 Gorge Rd



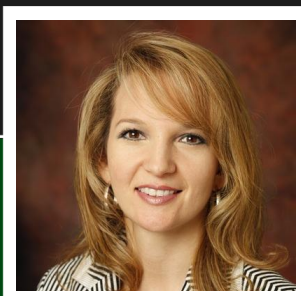
2 Bedroom Condo

This condo is LIKE A TOWNHOME with your OWN PRIVATE OUTSIDE ENTRANCE and a HUGE SOUTH-FACING 285sf PATIO surrounded by gardens, right across from Selkirk Waterway. The suite has two large bedrooms, 2 full bathrooms, a large dining area, spacious kitchen with breakfast bar, and a great floorplan with separated bedrooms for extra privacy. There's also a common roof-top patio with fantastic views of the city and the Sooke Hills. Tenants, pets, & children are all welcome here! This is all in a 2008-built worry-free building across the street from the Selkirk Waterway community & the Galloping Goose Trail. Great cafes, shops, rowing club, parks & more within a 5min walk OR a 10min bike-ride to downtown along the scenic waterfront Galloping Goose Trail. Note: finished area differs from strata plan 936sf finished, 341sf patio is incl in strata lot, totalling 1278sf strata lot. Verify size if important

Priced at
\$439,000

Area	Burnside
Bedrooms	2
Bathrooms	2
Strata fees	\$390/mo
Floor Space	998

Age	2008
Taxes	1867
Tax Year	2017
MLS#	393866
Parking	1 Space



NICOLE BURGESS

Pemberton Holmes - Cloverdale

Scan this QR
Code with your
smart phone



(250) 384-8124
nicole@nicoleburgess.com

150 - 805 Cloverdale Ave
Victoria, V8X 2S9