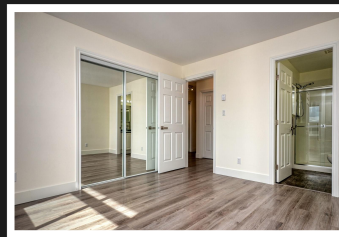


PEMBERTON
HOLMES

· ESTABLISHED 1887 ·

203-2440 OAKVILLE AVE



Location, Location, Location! Orchard Place is 1.5 blocks from Beacon Ave in the heart of Sidney. With South and West exposure, it may be the brightest and warmest condo anywhere, with large windows and 3 balconies that run the full length of the home. 1120 sq. ft. of living space, 2 bedrooms, 2 bathrooms, in suite washer/dryer, ensuite with walk-in shower, large dining area and separate eating area in the kitchen, with top of line LG appliances. Fireplace in the living room for those cool evenings is included in the monthly Strata fees. Separate storage unit, on-site covered parking, in-suite fire sprinklers, 5 minute walk to the beach, all amenities and wheel-chair friendly. A well maintained building, with professional Strata Management Company, that has overseen numerous upgrades throughout the building. Move-in ready and a pleasure to show.



Priced at
\$659,500

Area	Sidney S-East	Age	1995
Bedrooms	2	Taxes	2160
Bathrooms	2	Tax Year	2024
Lot Size	1318	MLS#	951420
Floor Space	1120	Parking	

INEZ LOUDEN, FRI

Pemberton Holmes - Sidney

Scan this QR
Code with your
smart phone



(250) 656-3486
inezlouden@telus.net
www.inezlouden.com

107-2360 Beacon Ave
Sidney, V8L 1X3