

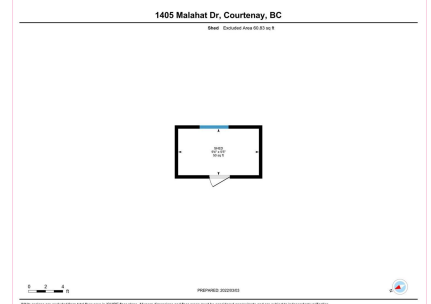
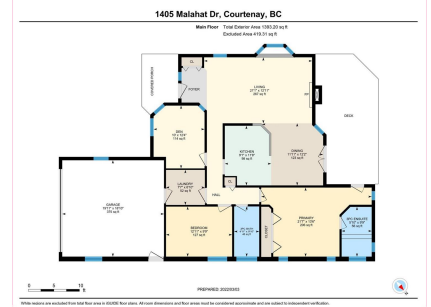
SPACIOUS AND BRIGHT

1405 Malahat Dr
\$769,000



OPEN CONCEPT

Spacious and bright, this unique rancher has much to offer. Bright and sunny on a corner lot, the open concept floor plan features 13 ft vaulted ceilings in the living room, entranceway with glass sidelights, bay window in the living room, gas fireplace, laminate floors, and French doors opening onto the newly replaced deck. Glass block brightens the entire house, giving it a spacious and open feeling, and there is a large Primary bedroom also with vaulted ceilings, and ensuite with soaker tub. Truly a unique design, this must-see home also features a detached accessory shed for extra storage, and for other uses that need a dry space. Close to schools, parks, shopping and the hospital and College, quick possession is available.



| | | | |
|-------------|----------------|----------|--------|
| Area | Courtenay East | Age | 1991 |
| Bedrooms | 2 | Taxes | 4266 |
| Bathrooms | 2 | Tax Year | 2021 |
| Lot Size | 7840.8 | MLS# | 896013 |
| Floor Space | 1393 | Parking | |



To view interactive floor plans scan this QR code with your smart phone



Marc Villanueva
RE/MAX OCEAN PACIFIC REALTY (CQ)

(250) 339-2021
282 Arderton Road
marc@marvilla.com
marvilla.com