

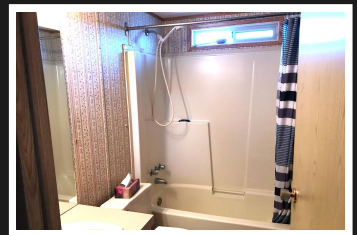
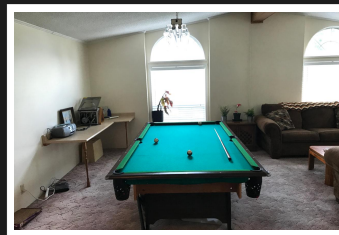
PEMBERTON
HOLMES

· ESTABLISHED 1887 ·



3 BED HOME, KID & PET FRIENDLY

124-13 Chief Robert Sam Lane



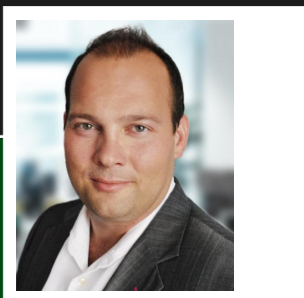
124-13 Chief Robert Sam Lane

At almost 1500 sf and offering 3 bedrooms and 2 bathrooms this home has space for the kids, pets and even Gramma. The home has been equipped with a wheel chair elevator at the front entrance and the open floor plan is great for people with mobility issues. The park is very well kept and is located at the end of a no thru street. The home is situated in a lovely location and has just enough yard to enjoy some gardening and offer parking for up to 4 vehicles. This home was built in 1990 so it's new enough to qualify for a 25 year mortgage, OAC*. Request a copy of the floor plans to see how the garage has been converted into living space, including a wet bar. Kids, Pets & Barbecues Allowed!

Priced at
\$175,000

Area Glentana
Bedrooms 3
Bathrooms 2
Lot Size 0.05
Floor Space 1478

Age 1990
Taxes 1158
Tax Year 2017
MLS# 385421
Parking 4 Spaces



JEFF MARTENS

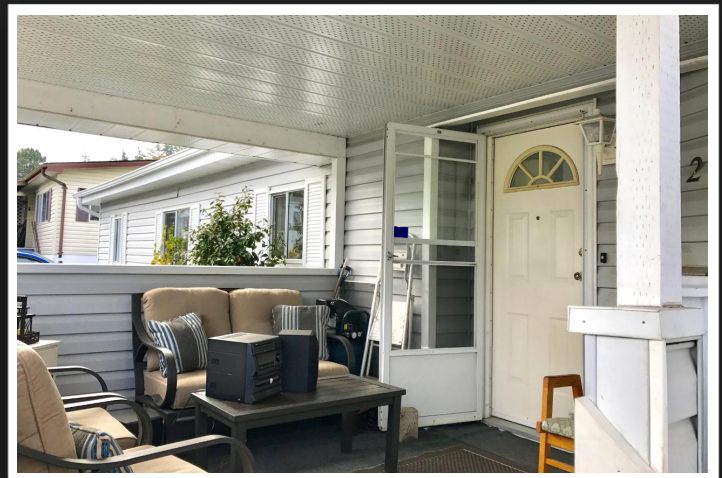
Pemberton Holmes - Cloverdale

Scan this QR
Code with your
smart phone



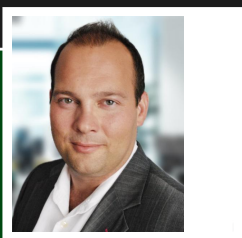
(250) 384-8124
jeff@jeffmartens.ca
www.jeffmartens.ca

150 - 805 Cloverdale Ave
Victoria, V8X 2S9



Kids, Pets and Barbecues Allowed!

At almost 1500 sf and offering 3 bedrooms and 2 bathrooms this home has space for the kids, pets and even Gramma. The home has been equipped with a wheel chair elevator at the front entrance and the open floor plan is great for people with mobility issues. The park is very well kept and is located at the end of a no thru street. The home is situated in a lovely location and has just enough yard to enjoy some gardening and offer parking for up to 4 vehicles. This home was built in 1990 so it's new enough to qualify for a 25 year mortgage, OAC*. Request a copy of the floor plans to see how the garage has been converted into living space, including a wet bar. Kids, Pets & Barbecues Allowed!



JEFF MARTENS

Pemberton Holmes - Cloverdale

(250) 384-8124
jeff@jeffmartens.ca
www.jeffmartens.ca

150 - 805 Cloverdale Ave
Victoria, V8X 2S9