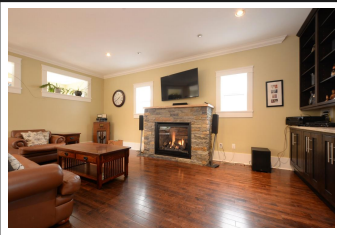


PEMBERTON  
HOLMES

· ESTABLISHED 1887 ·

# CLASSIC CRAFTSMAN

## 2312 HOWARD ST



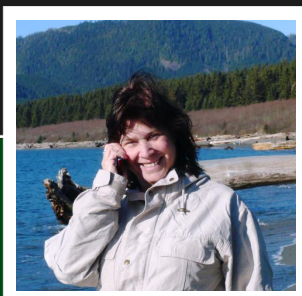
### Walking Distance to Jubilee Hospital

Classic Craftsman Built 2013 Home with all the elegant touches you would want! Well designed floor plan of 3300 sq. ft. includes 5 Bedrooms with 3 1/2 baths, Heat Pump/in-floor heating, separate spacious dining area, open kitchen concept, butlers pantry, BlueStar 36" commercial gas range, Daytime dining area, South facing sun room. Living area with gas fireplace/ built in cabinets. Separate/self contained legal suit with own hydro meter. Detached 17 X 17 Unfinish Garage. Storage area in basement. Desirable Fernwood area, walking distance to Jubilee Hospital, green spaces/play areas and local schools and shopping. Like new without the GST! Please be considerate of those who live here and do not enter property without agent present.

**Priced at**  
**\$1,150,000**

|             |          |
|-------------|----------|
| Area        | Fernwood |
| Bedrooms    | 5        |
| Bathrooms   | 4        |
| Lot Size    | 0.12     |
| Floor Space | 3483     |

|          |        |
|----------|--------|
| Age      | 2013   |
| Parking  | Garage |
| Taxes    | 5640   |
| Tax Year | 2016   |
| MLS#     | 373611 |



**NANCY VIEIRA, PREC**  
PEMBERTON HOLMES - SOOKE

Scan this QR  
Code with your  
smart phone



(250) 514-4750  
info@nancyvieira.com  
<http://www.nancyvieira.com>

2 - 6716 West Coast Rd  
Victoria