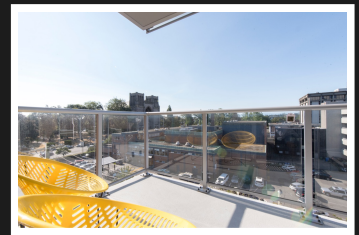
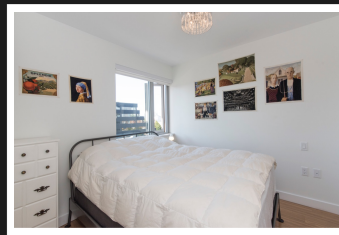
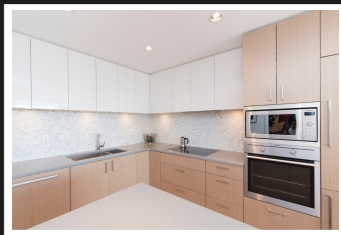


PEMBERTON
HOLMES

· ESTABLISHED 1887 ·

DOWNTOWN VICTORIA

608-838 Broughton St



BEDROOMS 1, BATHROOMS 1

This nearly new 1bed/1bath offering in the fabulous "Escher" building boasts an open kitchen with expansive island & bar, high end appliances, and chic kitchen counters, cabinets and tiling. The living/dining area opens onto a sunny balcony with huge city and mountain views. The bedroom offers double closet space & a cheater door to a spacious & stylish bathroom. The built-in desk nook makes for an ideal home office. Enjoy in-suite laundry, a secure underground parking spot, (along with underground visitor parking), a secure storage locker, and a sweet rooftop terrace with BBQ & entertainment areas and 360 degree panoramic views. Pets and Rentals are also welcome. Within steps of cafes, shops and restaurants, this is the best of what Victoria's vibrant downtown core has to offer.

Priced at
\$475,000

Area	Downtown
Bedrooms	1
Bathrooms	1
Lot Size	0.01
Floor Space	576

Age	2017
Taxes	1796
Tax Year	2018
MLS#	397532
Parking	1 Space



JENS HENDERSON

Pemberton Holmes - Cloverdale

Scan this QR
Code with your
smart phone



(250) 384-8124
jens_henderson@hotmail.com
jenshenderson.com

150 - 805 Cloverdale Ave
Victoria, V8X 2S9