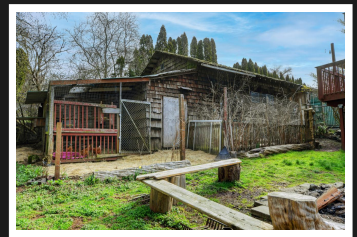
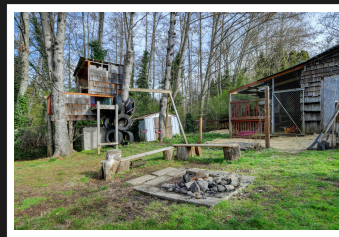
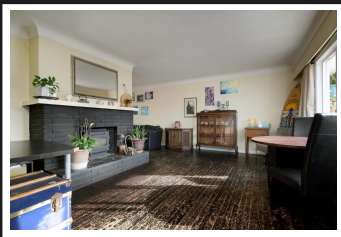


PEMBERTON  
HOLMES

· ESTABLISHED 1887 ·

# BEAUTIFUL SOOKE GARDEN HOME

6770 Grant Rd

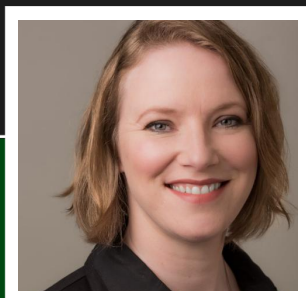


## 6770 Grant Rd

Permaculture in the heart of Sooke! This home has it all for the green thumb, raised bed gardens, a greenhouse, mature fruit trees and a chicken coop. This large lot could be developed to add another dwelling or enjoyed for the ample yard and abundant harvest. Large workshop and parking for several vehicles adds value to this character 5 bedroom home. A hot tub in the back to relax the muscles after a full day in the garden is the icing on the cake! Walking distance to the Ed McGregor Park, Sooke Brewing, Stick in the Mud Coffeehouse and everything else the town of Sooke has to offer. One bedroom suite is tenanted and available to show on a second showing with 24 hr notice. Sq ft & measurements from floor plan. Verify if important.

**Priced at**  
**\$729,000**

Area	Broomhill	Age	1967
Bedrooms	4	Taxes	3696
Bathrooms	3	Tax Year	2020
Lot Size	14810	MLS#	869242
Floor Space	2316	Parking	



TERESA HOULE

Pemberton Holmes - Sooke

Scan this QR  
Code with your  
smart phone



(250) 642-3240  
houlerealty@gmail.com  
www.teresahoule.com

2-6716 West Coast Rd  
P.o. Box 189, V9Z 0P7