

Lee Chambers
Pemberton Holmes - Cloverdale

(250) 384-8124
leechambers@shaw.ca
150-805 Cloverdale Ave



309-932 Johnson St



Lee Chambers
Pemberton Holmes - Cloverdale

(250) 384-8124
leechambers@shaw.ca
150-805 Cloverdale Ave



309-932 Johnson St

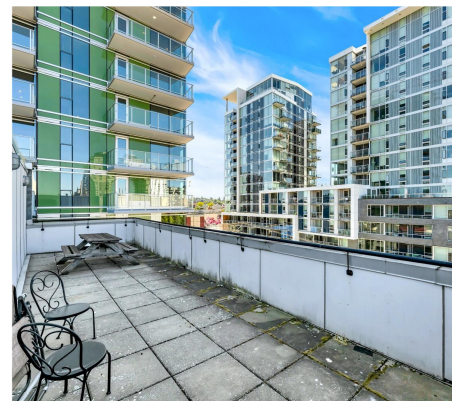
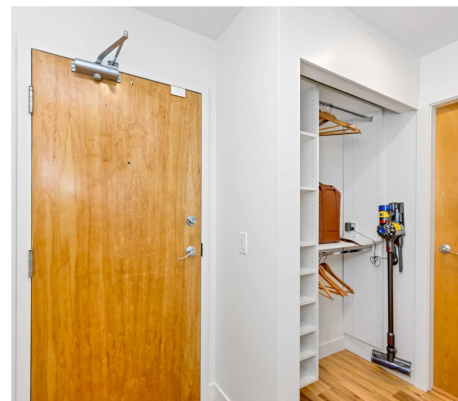
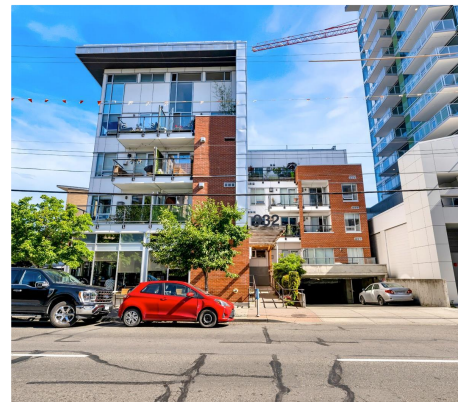
\$429,900



309-932 Johnson St

It's the best one, and at a great price - the downtown lifestyle at its very best! Completely updated 580 sq. ft. downtown 1 bedroom, 1 bathroom condo. All new flooring, kitchen, bathroom, inset pot lighting and closet built-ins (see the full update list!). Featuring gas fireplace, walk-in rain shower, in-suite laundry, back splash, south facing patio and built in breakfast nook. You'll have a secure UNDERGROUND PARKING spot, in a friendly, clean and well-maintained building. RENTALS, BBQ's and PETS allowed. Rooftop common patio, bike storage, separate storage & a convenient coffee shop in the building. Surrounded by BC Transit options to get you everywhere you need to go!

Area	Downtown
Bedrooms	1
Bathrooms	1
Lot Size	581
Floor Space	581
Age	2004
Taxes	2021
Tax Year	2023
MLS#	969726
Parking	



Lee Chambers

Pemberton Holmes - Cloverdale

(250) 384-8124

leechambers@shaw.ca

150-805 Cloverdale Ave