

Dream Homes

Victoria



839 Villance St



Andrew Plank

Royal LePage Coast Capital - Chatterton

(250) 360-6106

110 - 4460 Chatterton Way

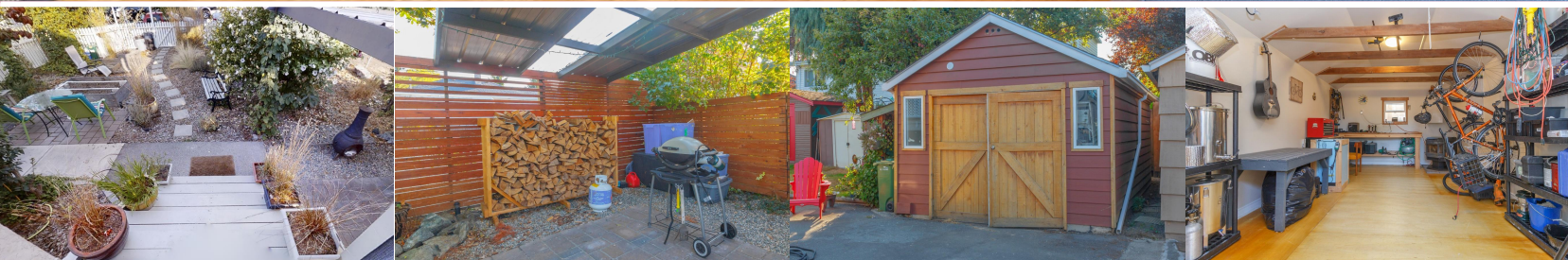
info@andrewplank.com

<http://www.andrewplank.com>



Andrew Plank

Royal LePage Coast Capital - Chatterton



839 Villance St

Area	Mayfair	Age	1946
Bedrooms	3	Taxes	2357
Bathrooms	1	Tax Year	2019
Lot Size	3132	MLS#	855083
Floor Space	869	Parking	Garage or street

Making the most of its 869sq ft, this one-level home flows in a very functional way with no wasted space. It's bright and cheerful, thoughtfully updated for a modern aesthetic yet retaining much of its original character. Light streams through banks of large windows making the oak and fir hardwood floors gleam. Features include a Juliet balcony off one bedroom, wainscoting, skylight above kitchen bar, white subway tile backsplash, gorgeous 4pc bath and a cozy propane fireplace in the living room. The location is central, an easy bike to town along the Galloping Goose, nearby bus routes, and walkable for many errands and local parks. A real bonus here is the wired detached garage, a perfect man-cave, she-shed or they-bay. The front porch leads to a private covered patio & bbq area set in the 1500sqft fully-fenced yard. Great area for kids, with a playground just around the corner.

