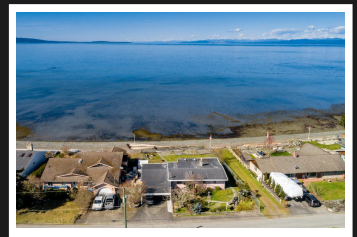
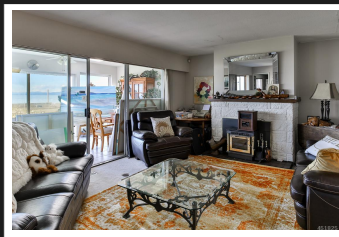


PEMBERTON
HOLMES

· ESTABLISHED 1887 ·

1021 SURFSIDE DRIVE

\$999,000



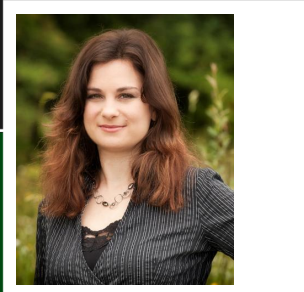
1021 Surfside Drive, Qualicum Beach

OCEANFRONT WALK-IN with stunning Ocean, Island, Mountain Views, Qualicum Beach, Mid-Vancouver Island. exceptional location on Desirable "One of A Kind" Surfside Drive. Walk right on to the magnificent Beach from your own Backyard. Older Rancher/Bungalow needs some updating, nice functional Floor Plan including 1713 SqFt finished plus 331 SqFt Storage Area. Wood Pellet Fireplace, Special Sunroom c/w Views, covered Carport, Gaarden Shed, lovely Garden Areas with mature Landscaping features, located on good sized Oceanfront Lot on a very quiet Cul-De-Sac Street. Great Investment as most of the Value is the Land. Bring your own Ideas and create that very Special Jewel you have been dreaming of!

Priced at
\$999,000

Bedrooms	2
Bathrooms	2
Lot Size	0.2
Floor Space	1713

Age	1973
Taxes	4826
Tax Year	2018
MLS#	451825
Parking	2 Spaces



JOLENE AARBO

Pemberton Holmes - Parksville

Scan this QR
Code with your
smart phone



(250) 248-8801
joleneaarbo@gmail.com
www.parksville-realestate.ca

135 Alberni Hwy
Parksville, V9P 2G6