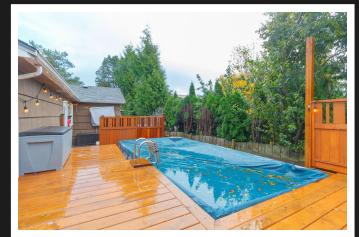
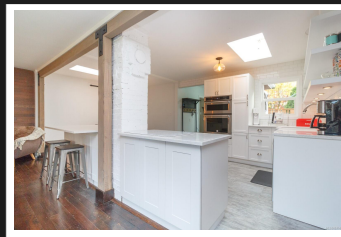


PEMBERTON
HOLMES

· ESTABLISHED 1887 ·

RENOVATED CHARACTER HOME

551 Tait St



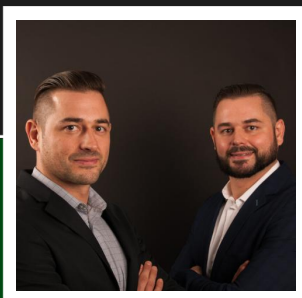
551 Tait St

This fully renovated character home in the most central location in Greater Victoria is a must-see. Close to Pacific Christian, Glanford Elementary, Spectrum; Royal Oak Village & Uptown Center. Many upgrades include a renovated kitchen with quartz countertops & top of the line appliances, basement suite, heat pump, power upgrade 200v amp, multi-camera security system, hot tub & above ground pool with custom cedar decking. Recently installed perimeter drains around the garage with new automated in-ground sprinkler system. Courtyard with beautiful grape covered pergola, 6 garden boxes growing kiwi, raspberries, strawberries & more. The detached double garage has been recently drywalled & insulated ready to turn into a garden suite or home gym.

Priced at
\$849,900

Area	Glanford
Bedrooms	5
Bathrooms	2
Lot Size	8055
Floor Space	2050

Age	1949
Taxes	3367
Tax Year	2019
MLS#	858149
Parking	



AARON & DARRON HAMBLEY
Pemberton Holmes - Westshore

Scan this QR
Code with your
smart phone



(250) 478-0779
adhambley@gmail.com

103 - 814 Goldstream Ave
Victoria, V9B 2X7