

**PEMBERTON  
HOLMES**

· ESTABLISHED 1887 ·

# OASIS BY THE SEA

8003 Vye Road ~ Crofton



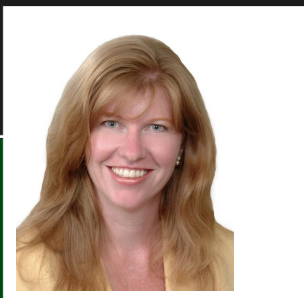
## An Oasis By The Sea with its own Seasonal Stream & Nature Path

Enjoy sounds of the trickling stream & birds' songs while strolling the paths & bridges. The fenced property boasts a cedar shed & large shed with custom tin feature wall. Gardeners & non-gardeners alike will appreciate the well-planned yard with low maintenance native plants to raised veggie gardens, fruit trees & ornamental plants. The home boasts a Master Bedroom on the main with his/hers walk-in closets & 4 Pc Ens with jetted tub. Bakers & chefs will appreciate the quartz counters, cupboard space & Samsung appliances. Enjoy the fireplace or open double French doors to your bbq balcony. Upstairs are 2 bedrooms & downstairs is a family room, storage room & in-house workshop. Pride of ownership is evident. Walk to the ocean or drive to the Village to enjoy eateries, marina or even ferry to Salt Spring Island. This home & property are a must see!

**Priced at  
\$585,000**

Area	Crofton
Bedrooms	3
Bathrooms	4
Lot Size	0.6 Acre
Floor Space	3062 sqft

Built	2005
Taxes	4640
Tax Year	2018
MLS#	451629
Garage	Single



**SHAE WEBBER**

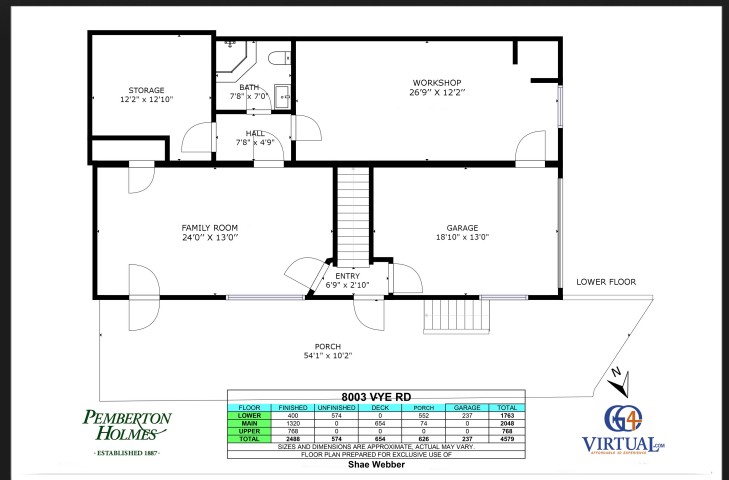
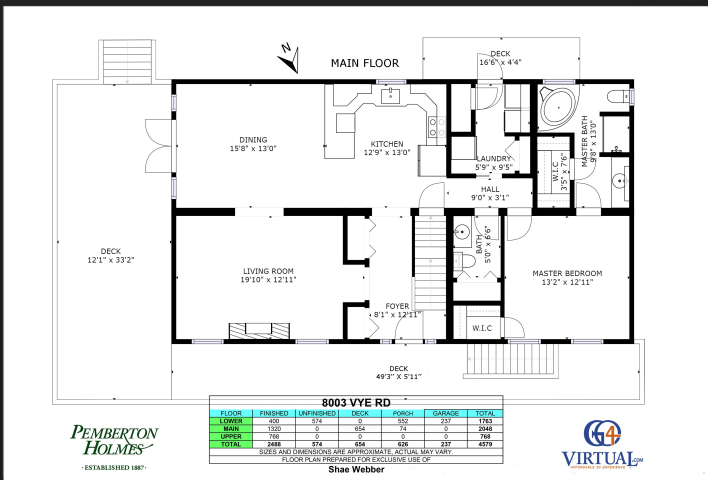
Pemberton Holmes - Duncan

Scan this QR  
Code with your  
smart phone



250-709-8888  
shae@webbers.ca  
<http://www.webbers.ca>

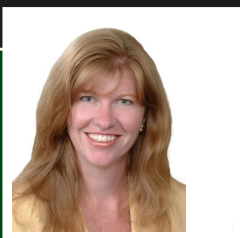
23 Queens Road  
Duncan, V9L 2W1



## Interactive and 3D Tour @ [www.webberhomesvancouverisland.ca](http://www.webberhomesvancouverisland.ca)

- Quality finishing including quartz counters, Moen faucet, top of the line Samsung appliances
- Forced air heating, gas fireplace, double French doors, mostly covered wrap-around balcony
- Master Bedroom on the main floor with his & hers walk-in closets + full Ensuite with jetted soaker + seated shower
- Seasonal stream through the fully fenced & landscaped property; meandering pathways & bridges
- Large yard storage shed features custom painted tin wall; 2nd cedar shed could be an artist's studio
- Two large cisterns and a jet pump to collect rainwater for irrigation; drip irrigation for drought resistant watering
- Two 200 amp power panels; lots of power for your in-house workshop!
- Single car garage plus lots of driveway space for RV parking

*Data is from sources deemed reliable; however, Buyers Must Obtain Independent Verification*



### SHAE WEBBER

No Hype - No Pressure - Just Great Service

250-709-8888  
 shae@webbers.ca  
<http://www.webbers.ca>

23 Queens Road  
 Duncan, V9L 2W1