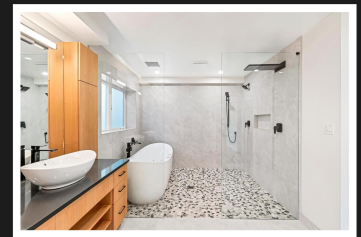
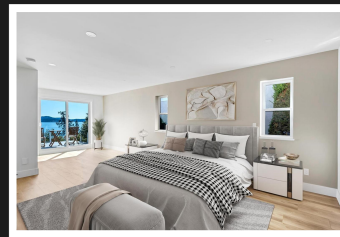
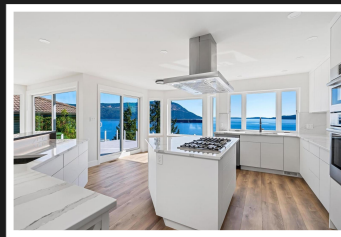
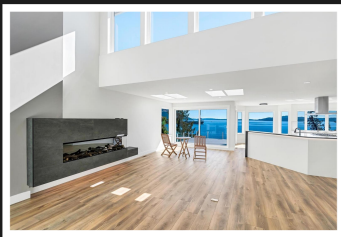


PEMBERTON  
HOLMES

· ESTABLISHED 1887 ·

# WATERFRONT ARBUTUS RIDGE

3735 Marine Vista



## 3735 Marine Vista

This exquisite home was lovingly renovated to the highest quality. Waterfront home in Arbutus Ridge with expansive views of Mt Baker, Saltspring Island & Satellite Channel. Stunning sunrises & moon rises. Gorgeous custom kitchen cabinets with quartz countertops. High end Bosch SS appliances, Island with Bosch cooktop, raised kitchen bar with second "butler" sink and subtle lighting. There are discrete electrical plug ins in cupboard above fridge for TV. Living room has electric fireplace with lighting feature. Primary bedroom wing with deck access and electric fireplace with a seating area. One outstanding feature in the primary ensuite is the "wet room" that consists of frameless glass partially enclosing a jetted/heated bathtub and 5 shower stations! Huge walk-in closet with closet organizers, desk & sink. Office/den has 8 ft custom doors for ocean views. Family room on lower level has 12 ft patio doors to access lower covered deck. Highly efficient natural gas fireplace with surround mantle. Plus 55 years.



**Priced at**  
**\$1,680,000**

Area	Cobble Hill	Age	1991
Bedrooms	3	Taxes	6204
Bathrooms	3	Tax Year	2023
Lot Size	5103	MLS#	970592
Floor Space	3138	Parking	

**SANDRA CARSWELL**

Pemberton Holmes - Duncan

Scan this QR  
Code with your  
smart phone



(250) 746-8123  
sandra@sandracarswell.ca

23 Queens Road  
Duncan, V9L 2W1