



*find your way*

# CHRISTOPH

REAL ESTATE GROUP

*1030 Farquharson Drive*

\$639,900



BEDROOMS:5 BATH:3 SQ FOOTAGE: 2810 LOT ACRES:.17 LOCATION:Courtenay



*Jakob Christoph*

PERSONAL REAL ESTATE CORPORATION

*office  
cell  
email  
web*

250-339-2021  
250-702-6408  
office@wefindyourway.ca  
www.wefindyourway.ca



**RE/MAX**

EACH OFFICE IS INDEPENDENTLY OWNED AND OPERATED.  
282 ANDERTON AVE | COMOX BC | CANADA | V9M1Y2

FLOORPLANS AND MORE INFORMATION ON REVERSE SIDE. →

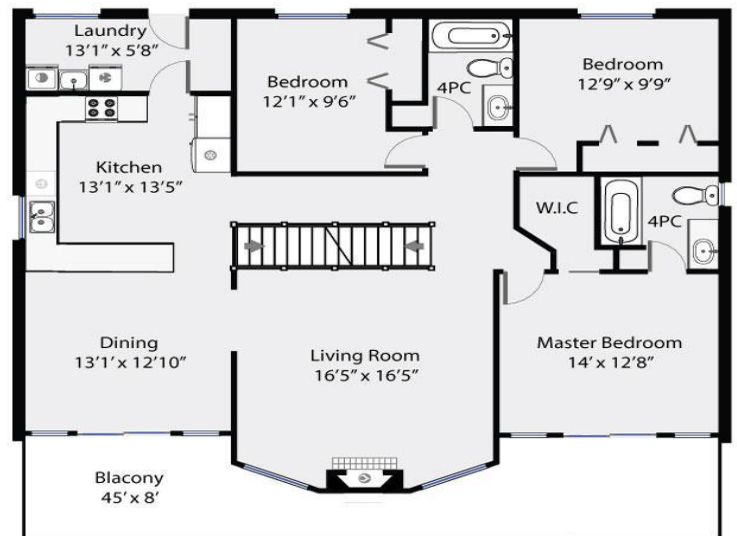
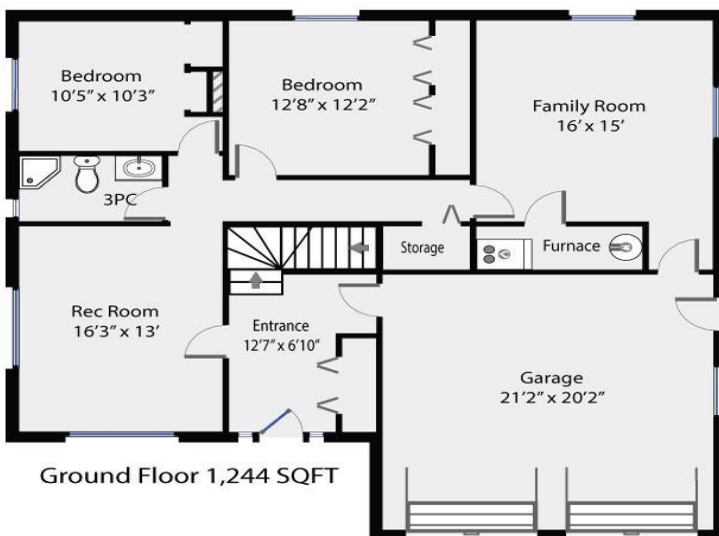


## About 1030 Farquharson Drive

Bright, sunny & spacious, this well maintained 2810sqft family home is nestled on a large .17 acre lot with Glacier & mountain range views. Located on a quiet cul-de-sac in desirable East Courtenay neighbourhood. Close proximity to Mark Isfeld school, parks, shops, Crown Isle, NIC & new hospital. Ground level features a double garage, welcoming foyer, recreation room, 3pc bath, 2 bedrooms, furnace/storage, Plus a family room (in-law suite potential!). Upstairs will impress with dining, living and master taking advantage of the southern exposure & views. Living room is a dream to entertain in & features a vaulted ceiling & gas fireplace. Also on this level is the laundry room leading to the backyard, 2 more bedrooms & a 4pc bathroom. The master suite features a walk-in closet, private 4pc ensuite & sliders to the front balcony. Neat & tidy, family oriented neighbourhood, quick possession available. Click the Multimedia Link to view a Virtual Tour of this home.

## 1030 Farquharson Drive

Total Square Footage 2,810 SQFT



PREPARED FOR EXCLUSIVE USE OF JAKOB CHRISTOPH  
MEASUREMENTS ON PLANS ARE INTENDED FOR VISUAL  
REFERENCE ONLY AND SHOULD BE VERIFIED.  
ALL AREA SQFT TOTALS ARE INCLUSIVE OF EXTERIOR WALLS.  
ALL INTERIOR DIMENSIONS ARE FROM INTERIOR WALLS.

449467 © 2019 VIREB

MEASUREMENTS ARE APPROXIMATE AND TO BE VERIFIED IF IMPORTANT