



543 Rothdale Drive



Here's 2172 sq. ft. of fabulous on a quiet cul-de-sac in Ladysmith! This 4-bdrm, 3-bath home is ideal for a family, with separate dining area, gorgeous kitchen counters, updated bathrooms, hot water on demand, and electric forced air plus two woodstoves. The shed is a gardener's dream, shop is wired for 220, and everyone will love the entertainment-sized covered deck, plus the patio! Room for boat or RV parking, garden area, and a backdrop of mature trees. Don't wait to view this wonderful property, Call to view today!

Area	Z3 Ladysmith	Taxes	4075
Bedrooms	4	Tax Year	2018
Bathrooms	3	MLS#	448494
Lot Size	0.22	Parking	Carport - Single
Floor Space	2172		



To view interactive floor plans scan this QR code with your smart phone



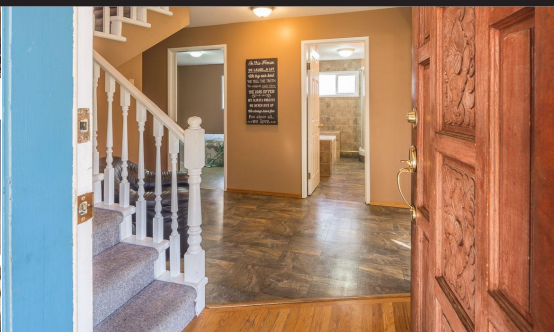
Carol Warkentin*
RE/MAX Ocean Pointe Realty (LD)

(250) 667-7653
Box 970, 640 Trans Canada Hwy
itscarol@shaw.ca
www.itscarol.ca

543 Rothdale Drive



Here's 2172 sq. ft. of fabulous on a quiet cul-de-sac in Ladysmith! This 4-bdrm, 3-bath home is ideal for a family, with separate dining area, gorgeous kitchen counters, updated bathrooms, hot water on demand, and electric forced air plus two woodstoves. The shed is a gardener's dream, shop is wired for 220, and everyone will love the entertainment-sized covered deck, plus the patio! Room for boat or RV parking, garden area, and a backdrop of mature trees. Don't wait to view this wonderful property, Call to view today!



Carol Warkentin*

RE/MAX Ocean Pointe Realty (LD)

(250) 667-7653

Box 970, 640 Trans Canada Hwy
itscarol@shaw.ca
www.itscarol.ca

