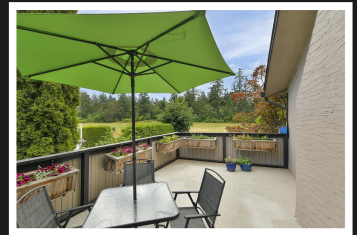
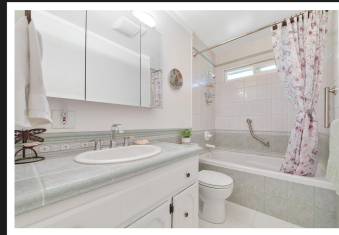
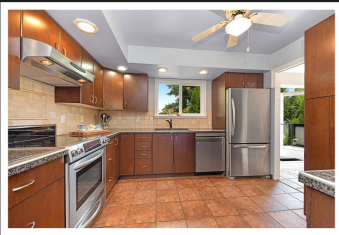


PEMBERTON
HOLMES

· ESTABLISHED 1887 ·

BRENTWOOD BAY HOME

1204 Marin Park Dr



5 Bedroom Home with a 2 Bedroom Suite!

Ideal family home in the heart of Brentwood Bay, nestled in a quiet cul-de-sac with farmland across the street. This private and tranquil home set amid mature gardens is just a short walk to the village, marina, groceries, schools, parks, shops & cafes. This updated 1973 home has vinyl windows, forced-air natural gas heat, laminate & tile floors, granite tile kitchen countertops, and tile countertops & floors in the bathrooms. There are 3 Bdrs on the main floor, an ensuite off the primary bedroom, and a 2-Bdr suite downstairs. Two sets of French doors open onto a large deck that overlooks idyllic pastures and mature gardens. The 2-Bdr suite is spacious with lots of windows, a big kitchen, an oversized bathtub, and a wood-burning fireplace in the living room. **BONUS:** A huge shed/workshop is like a greenhouse with floor-to-ceiling windows overlooking a private secret patio. Ample parking includes space for RVs or tenants. This home checks all the boxes!



Priced at
\$1,189,000

Area	Brentwood Bay	Age	1973
Bedrooms	5	Taxes	\$5509
Bathrooms	3	Tax Year	2024
Lot Size	11,361sf	MLS#	970192
Floor Space	2311sf	Suite	2 Bdr

NICOLE BURGESS

Pemberton Holmes - Cloverdale

Scan this QR
Code with your
smart phone



(250) 384-8124
nicole@nicoleburgess.com

150-805 Cloverdale Ave
Victoria, V8X 2S9