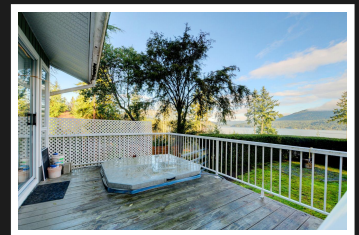
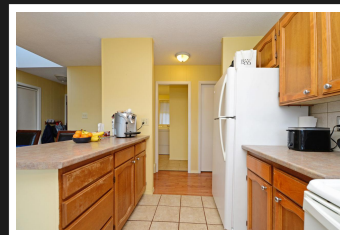
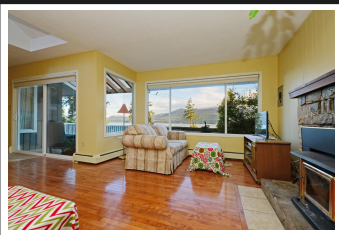


PEMBERTON  
HOLMES

· ESTABLISHED 1887 ·

# STUNNING WATERFRONT HOME

4357 Kingscote Rd

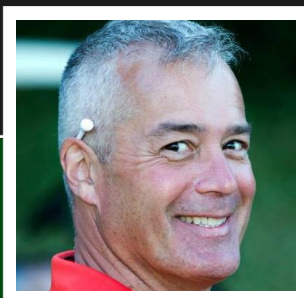


## 2 BEDROOMS, 2 BATHROOMS

Waterfront at this price? Unheard of! 1.34 acres shared with one other house. Cherry Point is a premium Cobble Hill neighbourhood filled with million and multi million dollar properties. Life moves a little slower here, 1150 sq ft 2 bedroom rancher with undeveloped basement. There is actually a small third bedroom off the master, could be good for nursery, younger ones or den. The views are incredible, or amble on down to the beach and take the canoe or kayak out. The house is a solid bungalow with steady improvements over the years and has tons of potential. Fireplace insert keeps the place comfy. Open floor plan great for entertaining or family time. Nice and bright, plenty of light and priced just right!

**Priced at**  
**\$625,000**

Area	Cowichan	Age	1973
Bedrooms	2	Taxes	3557
Bathrooms	2	Tax Year	2017
Lot Size	1.34	MLS#	387040
Floor Space	1159	Parking	3
		Spaces/vway	



JEFF SHORTER

Pemberton Holmes - Cloverdale

Scan this QR  
Code with your  
smart phone



(250) 384-8124  
jeff@jeffshorter.com  
<http://www.jeffshorter.com>

150 - 805 Cloverdale Ave  
Victoria, V8X 2S9