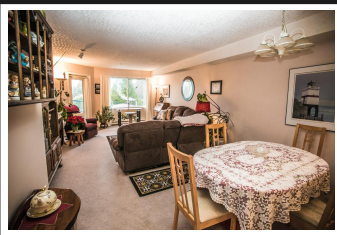


PEMBERTON  
HOLMES

· ESTABLISHED 1887 ·

# THE WELLINGTON

204-138 South Shore Road

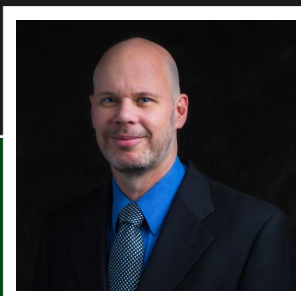


## 204-138 South Shore Road

The Wellington condominium in Lake Cowichan is a great place to retire, or an opportunity for a savvy investment. Rentals are very limited in the building, and the strata fees are affordable, making this a smart investment. This well maintained, secure building, with elevator, is a 55 plus owners' group, self-managed strata. It is within walking distance to amenities like shopping, public transit, Cowichan Lake, and marina. Located across the street from Saywell Park, this move-in ready, one bedroom + den condo features a 4-piece bath, and spacious balcony with mountain views. Stay cozy in the living room, next to the electric fireplace. Enjoy a nice, bright, open kitchen design, that includes an eating nook, ample cupboard space, fridge, stove, and dishwasher. Doing laundry is easy, with stacked washer/dryer in the suite. This is a very quiet and well maintained complex with all of Lake Cowichan at your doorstep. Measurements taken from original sales advertising for the condo, Buyers to verify any measurements that are important to them.

**Priced at**  
**\$224,900**

Area	Z3 Lake	Age	1998
Bedrooms	Cowichan	Taxes	1422
Bathrooms	1	Tax Year	2019
Lot Size	1	MLS#	464430
Floor Space	988	Parking	Open, Other



**PAUL TEDRICK**

Pemberton Holmes - Duncan

Scan this QR  
Code with your  
smart phone



250-216-6020  
paul@paultedrick.ca  
www.paultedrick.ca

23 Queens Road  
Duncan, V9L 2W1