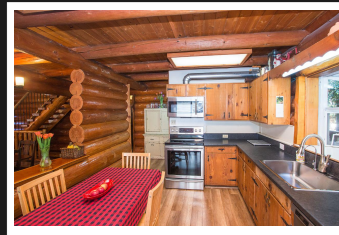


PEMBERTON  
HOLMES

· ESTABLISHED 1887 ·

# CUSTOM BUILT LOG HOME

2315 Evergreen Road

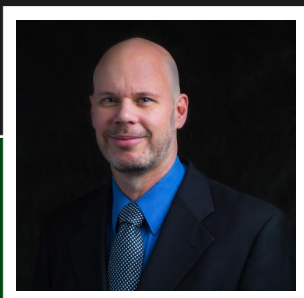


## 2315 Evergreen Road

A custom log house in the highly sought-after location of Shawnigan Lake. This 3300 SqFt. custom built home is south facing on 0.31-acre and sits on a quiet cul-de-sac, just a short walk to the lake. The living room features a stunning river rock fireplace for ambiance and warmth. Make gourmet meals in the rustic-meets-modern kitchen, with beautiful stainless appliances, and two large decks for entertaining. This spacious house offers 4 bedrooms, office, workshop, 3 bathrooms, finished basement, and professionally landscaped back yard. Spacious master bedroom and a walk-in closet. Enjoy the efficient Pacific Energy woodstove which warms the entire home. Shawnigan Lake is a destination location, offering world-class fishing, hiking, mountain biking, ocean kayaking, and swimming. You will be just minutes to coffee shops, boutiques, and grocery shopping. We are a Covid-19 aware household following public health guidelines.

**Priced at**  
**\$629,000**

Area	Z3 Shawnigan	Age	1980
Bedrooms	4	Taxes	3361
Bathrooms	3	Tax Year	2019
Lot Size	0.31	MLS#	467261
Floor Space	3319	Parking	2 Spaces C/P



**PAUL TEDRICK**

Pemberton Holmes - Duncan

Scan this QR  
Code with your  
smart phone



(250) 216-6020  
paul@paultedrick.ca  
www.paultedrick.ca

23 Queens Road  
Duncan, V9L 2W1