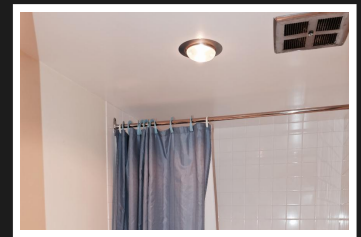


PEMBERTON  
HOLMES

· ESTABLISHED 1887 ·

# TOP FLOOR CONDO NEAR OCEAN



Looking for an affordable home close to a Park and the Ocean? This home is certainly that - plus more! Top floor, south facing and steps away from the Ocean, Marina and Lillian Hoffar Park, this bright home is ready to move into. The in-line dining and living area accommodates various seating arrangements with sliders to the south facing balcony. The galley Kitchen is very functional and the pass through opens it up allowing natural light to enter.....plus easy access to the Dining area. Large bedroom with double closets and sliders. Lots of closet space by the entrance and hallway and a full 4 piece Bath makes this a very comfortable home. Marina Park is a pet free 45+ building surrounded by gardens with a private courtyard where you can visit and BBQ. Amenities include one parking spot, storage locker, library, workshop, games room and bike storage.....plus heat and hot water is included in the low monthly strata fees! A must view!

**Priced at**  
**\$241,000**

Area	Sidney N-East	Age	1972
Bedrooms	1	Taxes	1098
Bathrooms	1	Tax Year	2019
Lot Size	0.02	MLS#	430257
Floor Space	684	Parking	1 Space



**INEZ LOUDEN, FRI**

Pemberton Holmes - Sidney

Scan this QR  
Code with your  
smart phone



(250) 656-3486  
inezlouden@telus.net  
<http://www.inezlouden.com>

107 - 2360 Beacon Ave  
Sidney, V8L 1X3