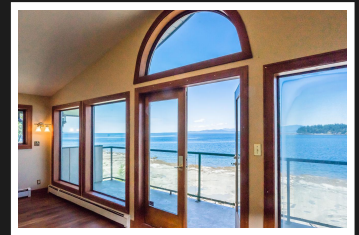
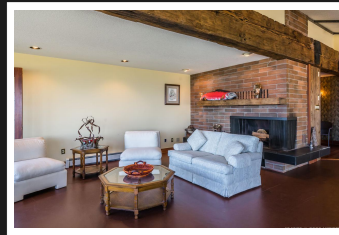
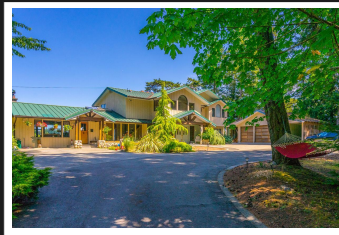
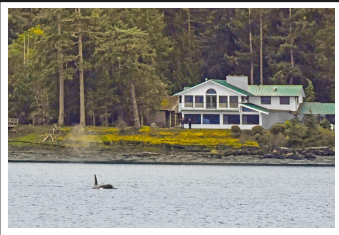


PEMBERTON
HOLMES

· ESTABLISHED 1887 ·

2051 HATHAWAY ROAD

\$2,595,000



2051 Hathaway Road, Nanoose

Spectacular private oceanfront acreage. This end of the road serene and park like estate offers a rare chance to enjoy a one of a kind location, with views second to none. A secluded and private little know location in Nanoose Bay. The ocean air is invigorating and the sunsets are spectacular. Enjoy an exemplary piece of Westcoast lifestyle, that includes whale watching, paddle boarding, kayaking, sailing, waterskiing and scuba diving a few steps away from the patio. Over 3 acres of level old growth forest and sunny pasture all tucked away on a quiet cul de sac location. This enchanting site brings the wildlife into view without leaving your chair. The 300' walk on waterfront offers inspiring views across the Strait of Georgia. No matter what the season, the oceanfront views are the reason this outstanding property has so much to offer! An exceptional offering in the Seahaven enclave of legacy homes. This carefully selected and constructed site is protected from most storms and rough seas, but perched at the water's edge to enjoy all nature has to offer! This carefully selected and constructed site is protected from most storms and rough seas, but perched at the water's edge to enjoy all nature has to offer.

Priced at
\$2,595,000

Area	Z5 Nanoose
Bedrooms	4
Bathrooms	5
Lot Size	
Floor Space	5919

Age	1979
Taxes	9462
Tax Year	2019
MLS#	464979



JOLENE AARBO

Pemberton Holmes - Parksville

Scan this QR
Code with your
smart phone



(250) 248-8801
joleneaarbo@gmail.com
www.parksville-realestate.ca

135 Alberni Hwy
Parksville, V9P 2G6