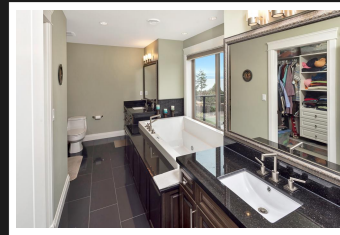


PEMBERTON
HOLMES

· ESTABLISHED 1887 ·

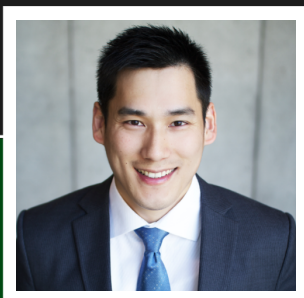
GLORIOUS PRIVATE PROPERTY

2054 Ferndale Rd



11 BEDROOMS, 9 BATHROOMS

Fabulous 180 degree Ocean View on a Glorious Quiet Private property in Gordon Head. LARGE LOT of 21,376 sq.ft. near the Gordon Point area. LARGE CUSTOM BUILT HOME of 6,348 sq.ft. was built by the owner in 2010. This quality built home features: 3 Car Garage (and with an additional separate garage in the back of house), Gourmet kitchen and Spice Kitchen on the main floor, Top quality appliance, 400amp power to the house, Movie/Entertainment area for family, In-Law Suite, Bonus room, etc. Come check out your Destined Home!



Priced at
\$2,777,000

DANIEL HSU

Pemberton Holmes - Cloverdale

| | | | |
|-------------|-------------|----------|-----------|
| Area | Gordon Head | Age | 2010 |
| Bedrooms | 11 | Taxes | 9570 |
| Bathrooms | 9 | Tax Year | 2017 |
| Lot Size | 0.49 | MLS# | 384915 |
| Floor Space | 6348 | Parking | 12 Spaces |

Scan this QR
Code with your
smart phone



(250) 384-8124
daniel@destinedhome.com
<http://www.destinedhome.com>

150 - 805 Cloverdale Ave
Victoria, V8X 2S9