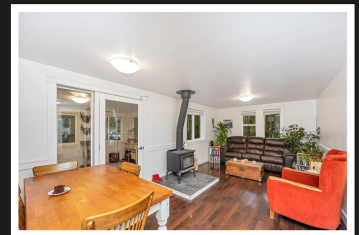
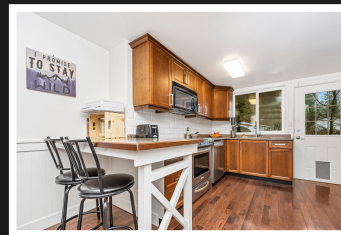
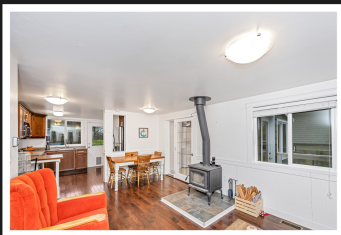


PEMBERTON  
HOLMES

· ESTABLISHED 1887 ·

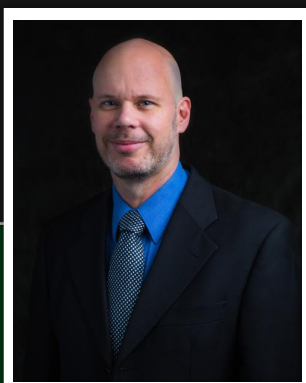
# COWICHAN STATION LIVING!

2410 First Avenue



## 2410 1st Ave

Quaint cottage home in the heart of Cowichan Station, this little gem is thought to be the original post office in town! Completely renovated with fresh paint, newer floors and carpets, stainless appliances, and beautiful wooden cabinetry, this 2-bedroom one level home is located in one of the most beautiful locations on the island. Enjoy the warmth and ambiance of your wood stove. Nearby is Bright Angel Park, where you can hike through the forest, walk the suspension bridge and swim in the Koksilah river's natural pools. Perfect for family picnics. Also close to the Sunrise Waldorf school, and "The Hub" community gathering place, you will be away from the city but in the heart of a small community. Buy your milk direct from the local dairy farmers, and your food from local farm markets. The yard is easy to take care of and is partially fenced. Easy access to shopping in the Cowichan Valley or Victoria.



**Priced at**  
**\$489,000**

Area	Cowichan	Age	1951
Bedrooms	Station/	Taxes	2011
Bathrooms	Glenora	Tax Year	2021
Lot Size	2	MLS#	893068
Floor Space	2	Parking	
	5290		
	1018		

**PAUL TEDRICK**

Pemberton Holmes - Duncan

Scan this QR  
Code with your  
smart phone



(250) 216-6020  
paul@paultedrick.ca  
www.paultedrick.ca

23 Queens Road  
Duncan, V9L 2W1