

Dream Homes

Nelson Rural



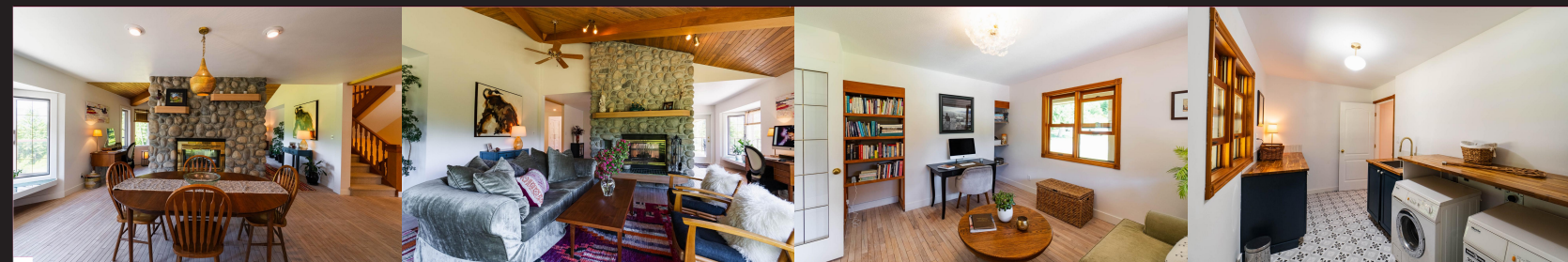
4625 Crescent View Drive



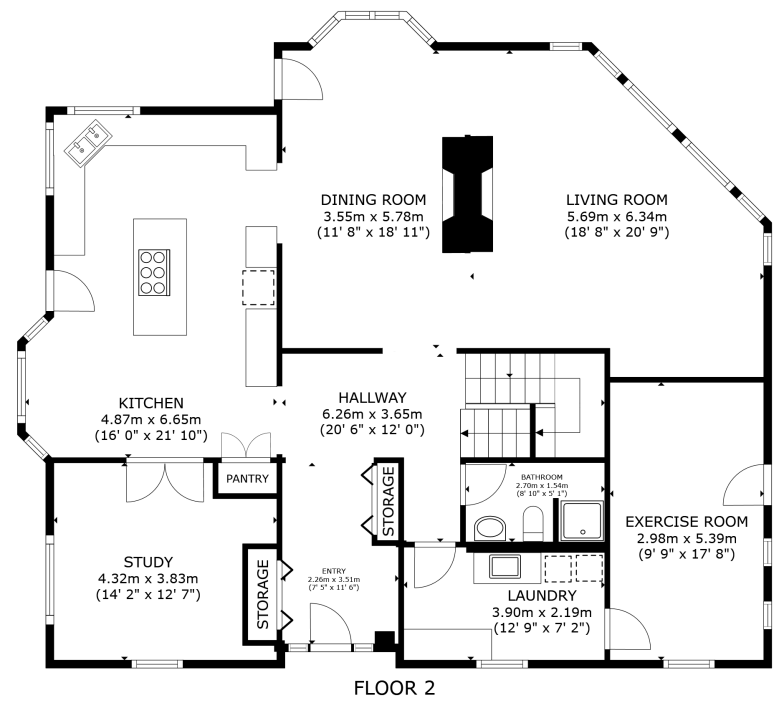
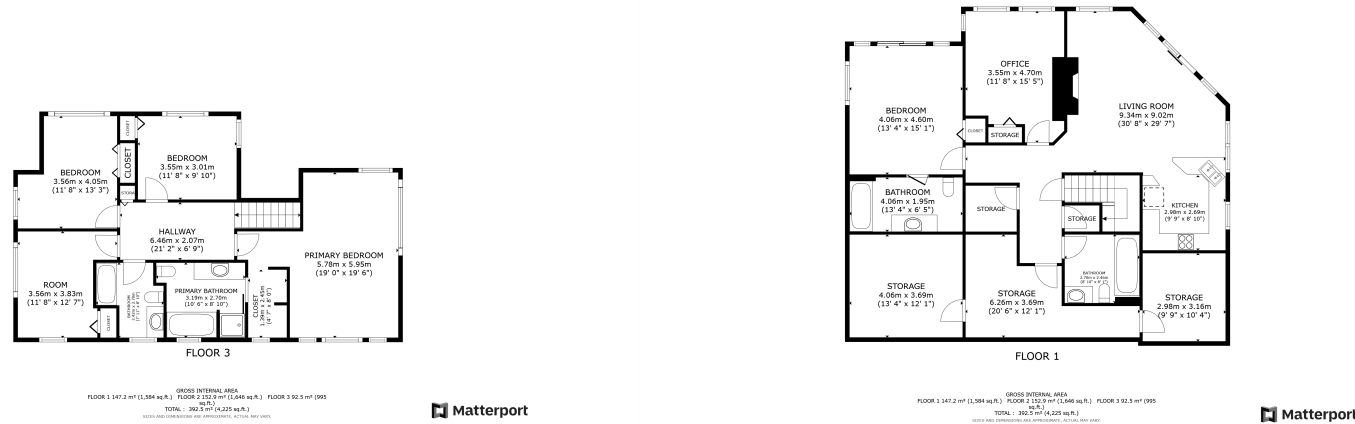
Karen Bennett
Bennett Family Real Estate

566 Baker Street

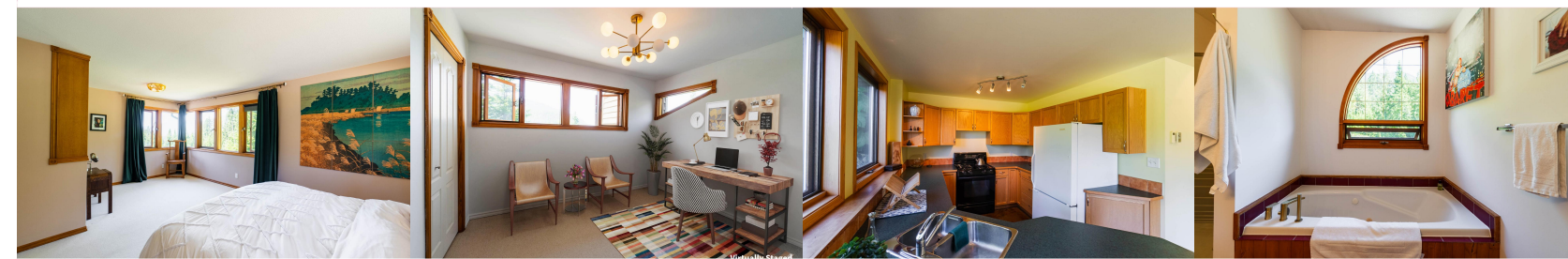
karen@nelsonproperty.com
nelsonproperty.com



Karen Bennett
Bennett Family Real Estate



GROSS INTERNAL AREA
 FLOOR 1 147.2 m² (1,584 sq.ft.) FLOOR 2 152.9 m² (1,646 sq.ft.) FLOOR 3 92.5 m² (995 sq.ft.)
 TOTAL : 392.5 m² (4,225 sq.ft.)
 SIZES AND DIMENSIONS ARE APPROXIMATE, ACTUAL MAY VARY.



| | | | |
|-------------|-----------------|----------|---------|
| Area | North Nelson to | Age | 1993 |
| Bedrooms | Kokanee Creek | Taxes | 5908 |
| Bathrooms | 6 | Tax Year | 2023 |
| Lot Size | 5 | MLS# | 2479301 |
| Floor Space | 10.03 | Parking | |
| | 4355 | | |

Discover your dream property, just 15 minutes from Nelson, and steps for Kokanee Glacier Provincial Park. This exceptional property boasts breathtaking lake views on a sprawling 10-acre lot with an abundance of privacy. Here you will find the tranquility of a secluded retreat with the convenience of nearby Nelson amenities. The main house features four spacious bedrooms and three bathrooms, including a huge master bedroom with a luxurious ensuite and a generous walk-in closet. The open and airy living areas are designed to maximize the stunning lake views, with large windows flooding the space with natural light. The living room, dining area, and kitchen seamlessly flow together, complete with a double sided fireplace. A recent incredible kitchen renovation, complete with Wolf stove will inspire creative food preparation and entertaining. The expansive wood deck is ideal for outdoor gatherings, providing a perfect vantage point to appreciate the natural beauty of the area. In addition to the main living area, the property includes a self-contained 2-bedroom, 2-bathroom suite. This additional living space offers flexibility for accommodating extended family, guests, or generating rental income. The 10-acre lot offers endless possibilities for outdoor activities and development, whether you dream of creating a garden oasis or setting up recreational areas. There is an RV hookup already in place. This is a rare find, combining luxurious living, stunning views, and ample land. Contact your realtor today for a private

Karen Bennett
 Bennett Family Real Estate

To view interactive floor plans scan this QR code with your smart phone



566 Baker Street
 karen@nelsonproperty.com
 nelsonproperty.com

