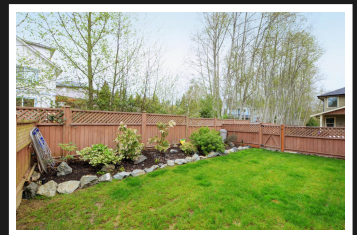
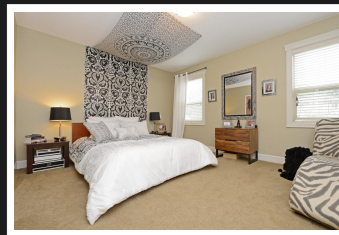
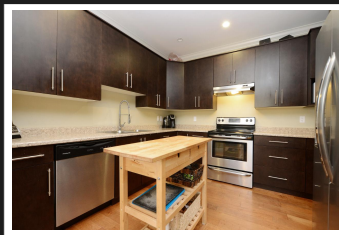
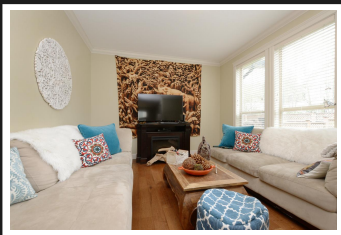


PEMBERTON
HOLMES

· ESTABLISHED 1887 ·

FANTASTIC TOWNHOUSE!

118-2253 Townsend Rd

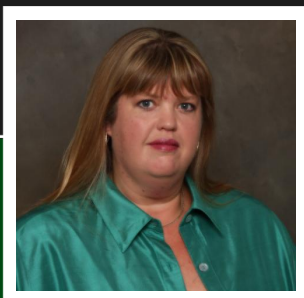


BEDROOMS 3, BATHROOMS 3

Live life Happy and Enjoy "Townsend Walk" in a End Unit Townhouse. This 2012, 2 Level, 3 beds, 2.5 baths plus a den home is ready to meet its new owners, kids, pets, rentals are all welcome. Fantastic main level with 9' ceilings open concept Kitchen/Living/Dining plus a bonus office or den. Upper Level includes 3 generous bedroom including a Master with a 4 piece en-suite. Beautifully maintained by professional grounds keepers (included in your strata fees) no work required to keep the complex looking show ready all the time. Attached single garage ... BONUS - Large extended patio wood deck, fully fenced and .. on Municipal trail system ... walk to school, walk to town or walk your dog!!!

Priced at
\$439,900

Area	Broomhill	Age	2012
Bedrooms	3	Taxes	2545
Bathrooms	3	Tax Year	2017
Lot Size	0.05	MLS#	390153
Floor Space	1754	Parking	13 Spaces



STACEY SCHARF

Pemberton Holmes - Sooke

Scan this QR
Code with your
smart phone



(250) 642-3240
sascharf@shaw.ca
www.staceyscharf.com

2 - 6716 West Coast Rd
Sooke, V9Z 0P7