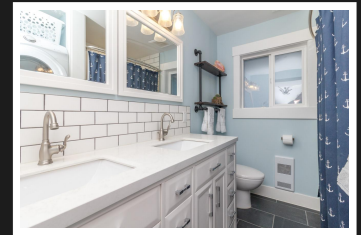
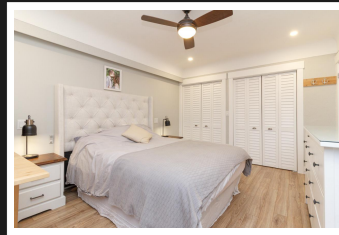


PEMBERTON
HOLMES

· ESTABLISHED 1887 ·

1205 PARKDALE DR



Welcome Home! This is the just the perfect layout for a retiree or a small family that wants a mortgage helper built in to the program. Located in the heart of the Glen Lake area of Langford sits this 2 Bedroom Up, 2 Bedroom down, very well maintained & updated home. Large 2 Bedroom main level with heated tile bathroom floor, separate laundry, custom blinds, cedar fencing & built in deck area with designer lighting. The yard provides plenty of room for the kids to play in your self-contained, fully fenced area that includes an irrigation system, pear trees & 3 storage sheds. New roof, all new vinyl windows & plenty of updates throughout including sound barrier insulation between upper & lower floors. End to end this home shows like it is just out of the pages of a magazine. Easy care yard & both units come with their own separated yard spaces. There is parking off street for up to 6 cars, exceptional long term tenants that would like to stay on currently paying \$1400 per month rent.

Priced at
\$685,000

Area	Glen Lake	Age	1970
Bedrooms	4	Taxes	2644
Bathrooms	2	Tax Year	2019
Lot Size	0.1	MLS#	419836
Floor Space	2065	Parking	6 Spaces



ANN WATLEY

Pemberton Holmes - Sidney

Scan this QR
Code with your
smart phone



(250) 656-3486
ann@annwatley.com
<http://www.annwatley.com>

107 - 2360 Beacon Ave
Sidney, V8L 1X3