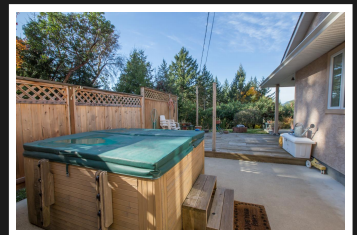
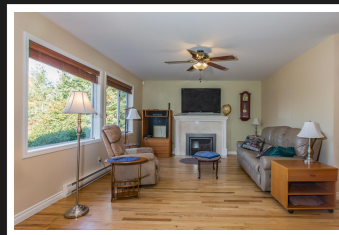
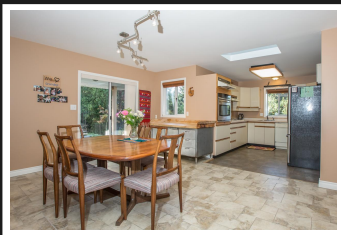


PEMBERTON  
HOLMES

· ESTABLISHED 1887 ·

# TWO FAMILY DWELLING + SHOP

## 6493 Nevilane Drive



### 6493 Nevilane Drive

Two family dwelling with deluxe workshop. This unique home located in desirable Lakeview Estates offers some great possibilities. The attached workshop is the handyperson's dream come true. Over 1400 sq ft, 2 11'6" doors, 2pc bath, 400 amp to house and shop with 3 phase power 1 pole away. Over wired and over insulated for a quiet living environment and fire suppression while shop is in use. The original, main level entry home offers 2 spacious bedrooms each with ensuite bath, double garage, kitchen with eating nook and an open dining area/living room with many upgrades including heated flooring and efficient LED lighting throughout. An addition started in 2010 is designed to accommodate an open design living room kitchen with vaulted ceilings and lake views plus two more bedrooms, laundry and a deluxe bathroom as well as a huge sundeck. Private .66 acre lot just minutes from Duncan.

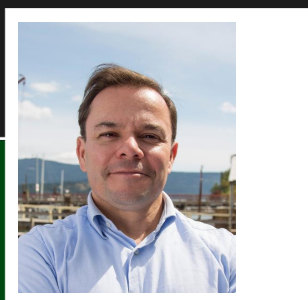
**Priced at**  
**\$699,000**

Area	Z3 East Duncan
Bedrooms	4
Bathrooms	3
Lot Size	0.66
Floor Space	2918

Age	1988
Taxes	4410
Tax Year	2017
MLS#	432674
Parking	4 Spaces, Garage - Double,

Addit<sup>350</sup>746-8123  
Parking

cowichanrealtor@gmail.com  
www.jasonfinlayson.com



**JASON FINLAYSON**

Pemberton Holmes - Duncan

Scan this QR  
Code with your  
smart phone



23 Queens Road  
Duncan, V9L 2W1