

Nelson Rural

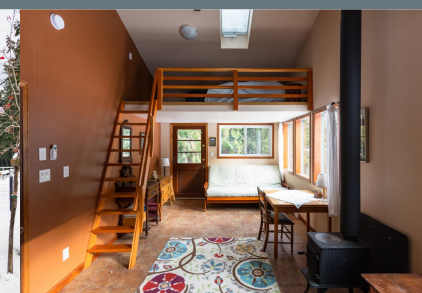


4038 Woykin Road

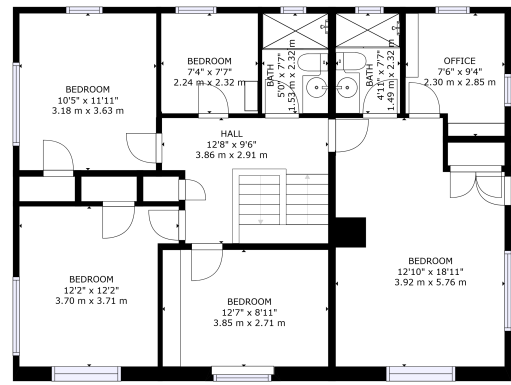


Karen Bennett
Bennett Family Real Estate

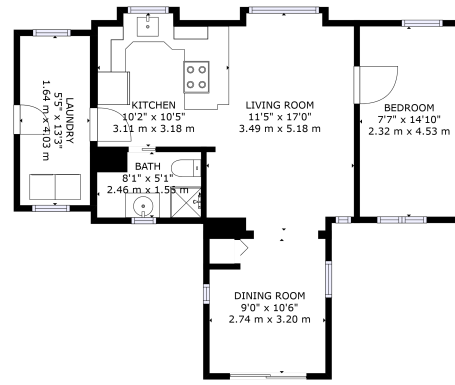
karen@nelsonproperty.com



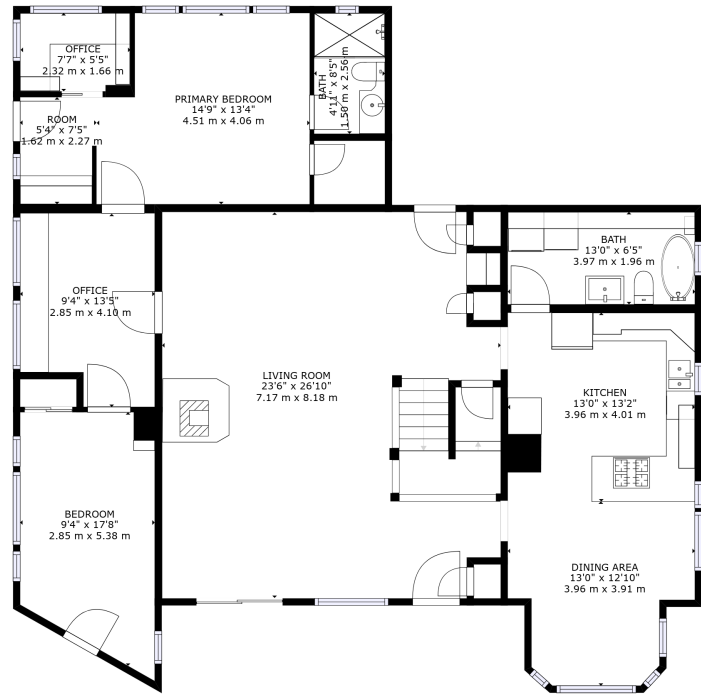
Karen Bennett
Bennett Family Real Estate



Matterport



Matterport



Matterport



Area	South Slokan to Passmore	Age	1982
Bedrooms	6	Taxes	2421
Bathrooms	5	Tax Year	2022
Lot Size	32.34	MLS#	2474513
Floor Space	3305	Parking	Garage

Experience the tranquility of this 32+ acre retreat along the Little Slokan River! Located just 30 minutes from Nelson or Castlegar on a well-maintained public road, Tulaberry Farm features a spacious six-bedroom farmhouse with an expansive kitchen, four bathrooms, a generous living room, and a country kitchen – ideal for a growing family. The property includes a secondary house built in 2000, boasting two bedrooms and two lofts. Various outbuildings, such as a barn, chicken coop, storage sheds, plumbed and heated workshop, studio guest space, two root cellars, two hoop houses, tractor shed, and ample covered parking, complement the main residences. With over 20 years of organic certification, Tulaberry Farm has been a highly productive farm cultivating berries, tree fruits, vegetables, poultry for eggs and meat, hogs, and beef cows. The fields are securely fenced, mainly with 6 ft fencing. Enjoy a refreshing summer swim in the river or unwind in the wood-fired hot tub during the winter. In 2013, in collaboration with the BC Wildlife Federation, a wetland area was established to attract local wildlife along the river frontage. Explore the potential for multi-generational living, housing for farm workers or agri-tourism opportunities offered by the additional residences. Don't miss the chance to immerse yourself in the serene beauty of this exceptional property and embrace the farm lifestyle with a closer connection to nature.

