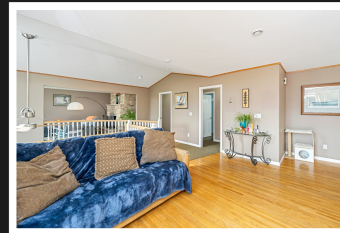


PEMBERTON
HOLMES

· ESTABLISHED 1887 ·

MAPLE BAY ~ SPINNAKER PLACE

6-6300 Genoa Bay Rd



6-6300 Genoa Bay Rd

In the perfect hillside location, this beautiful Maple Bay home with an ocean view is located in the 7-house subdivision of Spinnaker Place and is at the end of a private road and sits on almost half an acre. Enjoy the formal dining room on the main floor, along with the living room with stone fireplace. Also on the main floor are two bedrooms including the primary bedroom with ensuite and walk-in closet and private deck. The large kitchen has plenty of gorgeous cabinetry, stainless appliances, double oven, perfect for the avid cook, and a center island with a gas range. French doors lead to the front deck which spans most of the house. Relax on the back deck, which overlooks municipal forest reserve where you can access hiking and biking trails. Downstairs you will find two more bedrooms, a den, a media room, laundry, and access to the extra-large two-car garage. Keep warm in the winter with pellet stove and a wood-burning fireplace. A great family home to make your own.



Priced at
\$1,049,000

Area	East Duncan	Age	1992
Bedrooms	4	Taxes	6346
Bathrooms	3	Tax Year	2022
Lot Size	20473	MLS#	942834
Floor Space	3648	Parking	

PAUL TEDRICK

Pemberton Holmes - Duncan

Scan this QR
Code with your
smart phone



(250) 216-6020
paul@paultedrick.ca

23 Queens Road
Duncan, V9L 2W1