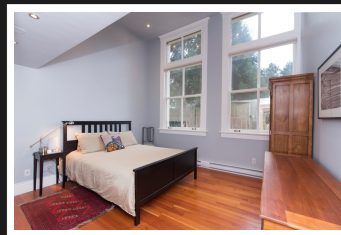
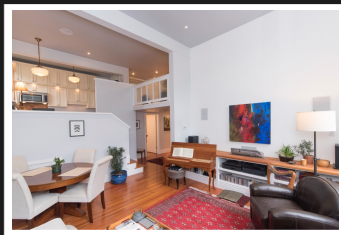


PEMBERTON  
HOLMES

· ESTABLISHED 1887 ·

# BEAUTIFUL JAMES BAY CONDO

204-120 Douglas St



## 2 BEDROOMS, 1 BATHROOM

Located in the beautiful James Bay area This unique & stylish heritage conversion is a 1 Bdr + Den condo renovated from top-to-bottom & includes gorgeous fir floors, beautiful baseboards + trim, stainless steel appliances and built in surround sound speakers. the high ceilings give this condo a townhouse feel. Its located across the street from Beacon Hill park and just a few blocks from Dallas rd.. This is an absolute must see!

**Priced at**  
**\$579,000**

Area	James Bay
Bedrooms	2
Bathrooms	1
Lot Size	0.03
Floor Space	1100

Age	1914
Taxes	2254
Tax Year	2017
MLS#	386963
Parking	1 Space



ROBERT COLE

Pemberton Holmes - Cloverdale

Scan this QR  
Code with your  
smart phone



(250) 384-8124  
realestatebyrobertcole@gmail.  
rebyrobertcole.ca

150 - 805 Cloverdale Ave  
Victoria, V8X 2S9