

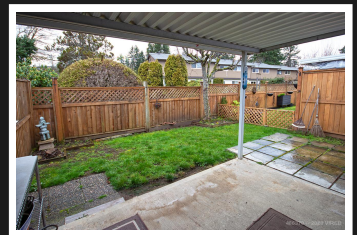
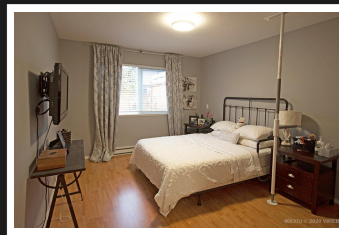
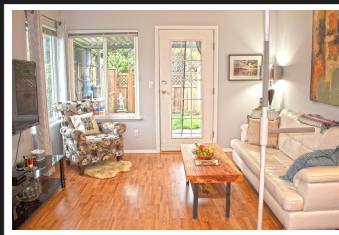
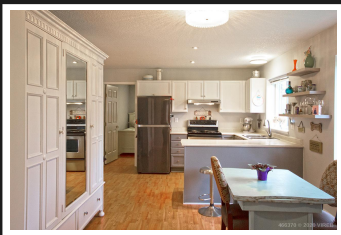
PEMBERTON
HOLMES

· ESTABLISHED 1887 ·



1-410 HARNISH AVENUE

\$359,000



1-410 Harnish Ave, Parksville

Lovely bright and open corner Patio Home at Harnish Lane in Parksville. The floor plan of this 2 Bedroom, 2 Bathroom unit is well designed with a spacious Master Bedroom and ensuite Bathroom with shower and 4 piece main Bathroom with shower and a second Bedroom. There is a large open Kitchen and Dining Room with large windows allowing lots of light throughout. The Living Room is bright with large windows. This home has had many updates including newer flooring throughout. Attached to the single car garage is an additional, large, 5' by 4' storage room. Situated in a great location just a short walk to the New Health Center, Schools, Parks and many walking trails. Pets Allowed. 55+ Complex.

Priced at
\$359,000

Area Z5 Parksville
Bedrooms 1
Bathrooms 2
Floor Space 932

Age 1992
MLS# 466370
Parking 1 Space,
Garage



JOLENE AARBO

Pemberton Holmes - Parksville

Scan this QR
Code with your
smart phone



(250) 248-8801
joleneaarbo@gmail.com
www.parksville-realestate.ca

135 Alberni Hwy
Parksville, V9P 2G6