

PEMBERTON
HOLMES

· ESTABLISHED 1887 ·

COWICHAN VALLEY VIEW HOME

6022 Salish Road



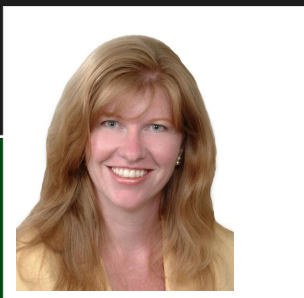
6022 Salish Road

Located in The Properties @ Maple Bay, this home boasts fantastic views of Quamichan Lake & Cowichan Valley. Modern updates include new counters (granite in kitchen, quartz in baths, marble in d/s bath), new carpet & fixtures, exterior paint (trim & shakes), some new lighting & new stainless steel refrigerator. Landscaping includes inground sprinklers, private patio with attractive screening & natural stairwell taking you to the top of the property where you can enjoy the expansive valley & lake views. Views are also enjoyed from the open concept main level of the home. Take in the stunning sunsets on either your front balcony or back yard. For the outdoor enthusiast, you are within close proximity of amazing hiking & mountain bike trails (Mt Tzouhalem & Maple Mtn). Marinas & public beach access are also only minutes away. A well appointed home sure to please!

Priced at
\$649,000

Area	Maple Bay
Bedrooms	4
Bathrooms	3
Lot Size	0.24
Floor Space	2118

Built	2003
Gross Taxes	3990
Tax Year	2017
MLS#	434762
Garage	Double



SHAE WEBBER

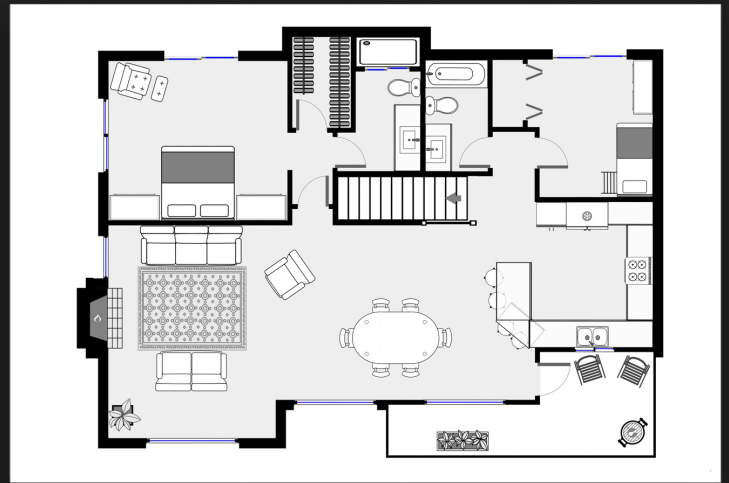
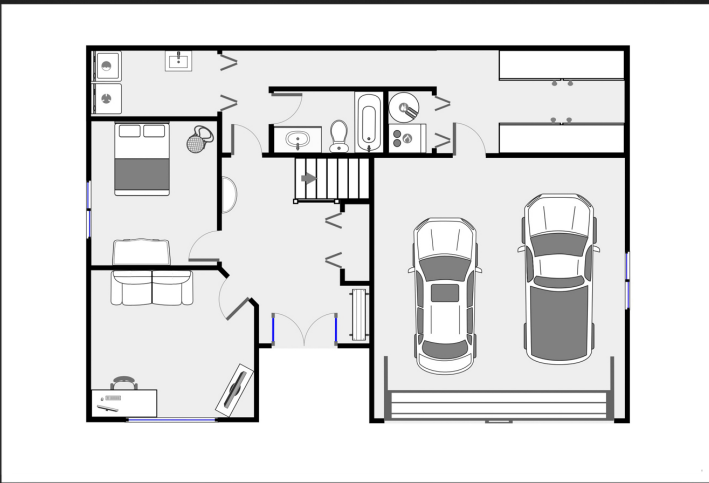
Pemberton Holmes - Duncan

Scan this QR
Code with your
smart phone



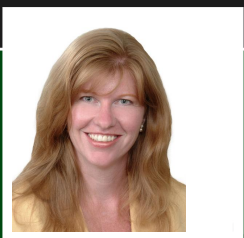
(250) 709-8888
shae@webbers.ca
<http://www.webbers.ca>

23 Queens Road
Duncan, V9L 2W1



6022 Salish Road ~ OPEN HOUSE Sunday, FEB 11th, 1:00-3:00

Located in The Properties @ Maple Bay, this home boasts fantastic views of Quamichan Lake & Cowichan Valley mountains. Modern updates include new counters (granite in kitchen, quartz in baths, marble in d/s bath), new carpet & fixtures, exterior paint (trim & shakes), some new lighting & new stainless steel refrigerator. Landscaping includes inground sprinklers, private patio with attractive screening & natural stairwell taking you to the top of the property where you can enjoy the expansive valley & lake views. Views are also enjoyed from the open concept main level of the home. Take in the stunning sunsets on either your front balcony or back yard. For the outdoor enthusiast, you are within close proximity of amazing hiking & mountain bike trails (Mt Tzouhalem & Maple Mtn). Marinas & public beach access are also only minutes away. This well appointed home is sure to please & is a must see! Contact Shae direct @ 250-709-8888 or email @ shae@webbers.ca



SHAE WEBBER

Pemberton Holmes - Duncan

(250) 746-8123
shae@webbers.ca
<http://www.webbers.ca>

23 Queens Road
Duncan, V9L 2W1