

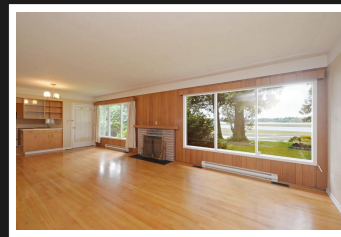
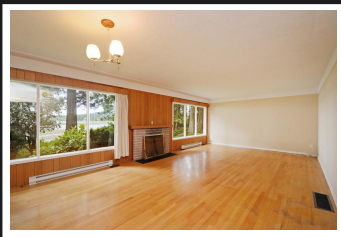
PEMBERTON
HOLMES

· ESTABLISHED 1887 ·



2 BEDROOM RANCHER

1996 Glenidle Rd

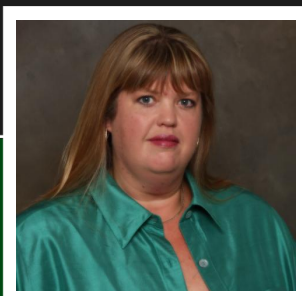


2 BEDROOMS, 1 BATHROOM

Ever dream of owning your own Oceanfront...start believing this private flat one acre of low bank is on the Victoria side of Sooke and can now be yours. Currently a 2 bedroom rancher this home has a open concept dining, living and kitchen with a lower level that can be developed to suit your family's needs... more bedrooms, games room or family room. Gardeners will love this property lots of potential or leave it natural and just sit back and watch the ever changing ocean views. Single garage great for a workshop. Septic and septic field have been completely replaced. Bonus small cabin also included.

Priced at
\$699,900

Area	Billings Spit	Age	1960
Bedrooms	2	Taxes	4311
Bathrooms	1	Tax Year	2017
Lot Size	1.04	MLS#	384078
Floor Space	1582	Parking	6 Spaces



STACEY SCHARF

Pemberton Holmes - Sooke

Scan this QR
Code with your
smart phone



(250) 642-3240
sascharf@shaw.ca
www.staceyscharf.com

2 - 6716 West Coast Rd
Sooke, V9Z 0P7