

# 68.85 Acre River Front Farm

2 McLure Ferry Road  
\$2,750,000



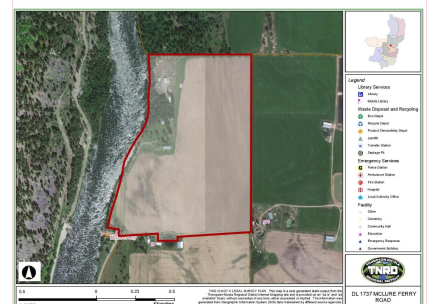
## Truck Shop, Cabins, Hayshed & More!

68.85 acre River Front Farm perfectly situated on no-thru road. Long driveway runs along the river leading to the stately 2600+ sq ft home and manicured lawns; then continues on to several outbuildings, with the produce fields on the right. The 1992 semi-custom two storey home was built with great attention to detail. Add your own flair and impeccable taste to make it yours! 3 bedrooms and 3 bathrooms. Formal tile entry with vaulted ceiling and skylight. Living room is sunken with domed, vaulted ceiling. Kitchen has island with cooktop, wall oven, farm sink, pantry, trash compactor, and more. Nook has egress door to patio. Sunken Family Room with wet bar and wood stove. Office/Library off the family room. Master Suite with 5 piece ensuite, fireplace, walk in closet and deck. This home was designed with functionality in mind. The massive 60 x 40 Truck Shop, complete with mezzanine, office, and bathroom. Approximately 60 acres are irrigated. 3 Log Cabins, Hayshed, Machine Shed, Sawmill Shelter. Property has 2 Shallow wells, Farm Status, ALR, Zoned SH-1. Irrigation pond, irrigation equipment and pivot. Just 25 minutes to Kamloops.



Area	McLure/Vinsola	Age	1992
Bedrooms	3	Taxes	3477
Bathrooms	3	Tax Year	2023
Lot Size	68.85	MLS#	174283
Floor Space	2624	Parking	Garage & C/P, Detached Garage/Shop, RV Parking

To view interactive floor plans scan this QR code with your smart phone



Kathy Campbell  
RE/MAX INTEGRITY REALTY

(250) 672-1070  
#2-4353 Conner Road Box 1289  
kathy@barriereproperties.com  
barriereproperties.com