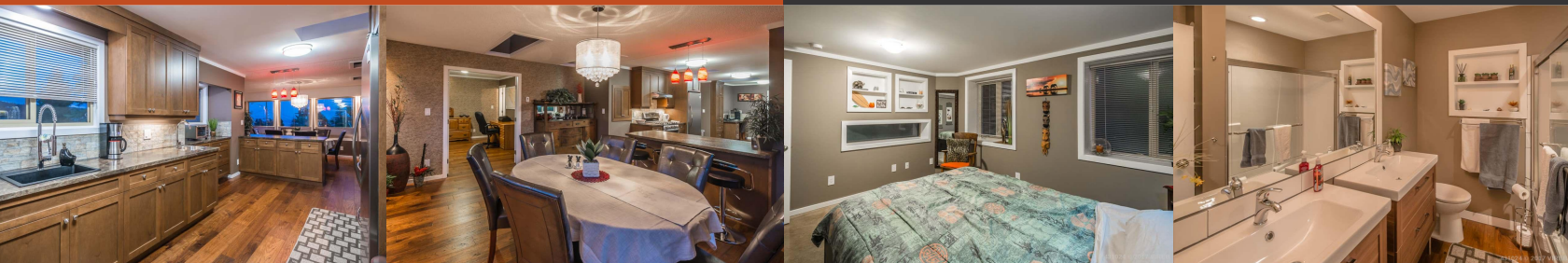




2665 Lynburn Cres

2665 Lynburn Cres
Call For Pricing



Modernized Lynburn Classic

Area	Z4 Departure Bay
Bedrooms	7
Bathrooms	7
Lot Size	0.23
Floor Space	3827
Age	1969
Taxes	3725
Tax Year	2017
MLS#	431024
Parking	2 Spaces, Multiple C/P



To view interactive floor plans scan this QR code with your smart phone

Overlooking Departure Bay in one of Nanaimo's most desirable neighbourhoods, this modernized Lynburn Classic is equally as impressive both inside and out. The floor plan was updated to feature 7 bedrooms, 7 bathrooms (5 are ensuites), and a 1 bedroom suite. Adding to the comfort is a natural gas high efficiency radiant in-floor heating system, twin 50 gallon hot water tanks, and new roof with 11 skylights. The quality finishing carries through to the polished concrete & triple gauge hardwood floors, real wood cabinets, stainless steel appliances, and brushed nickel accents. Outside the livability continues with a gazebo covered hot tub, a log cabin detached workshop, veggie gardens, and 12 fruit trees. Come explore, and make your next move the right move.



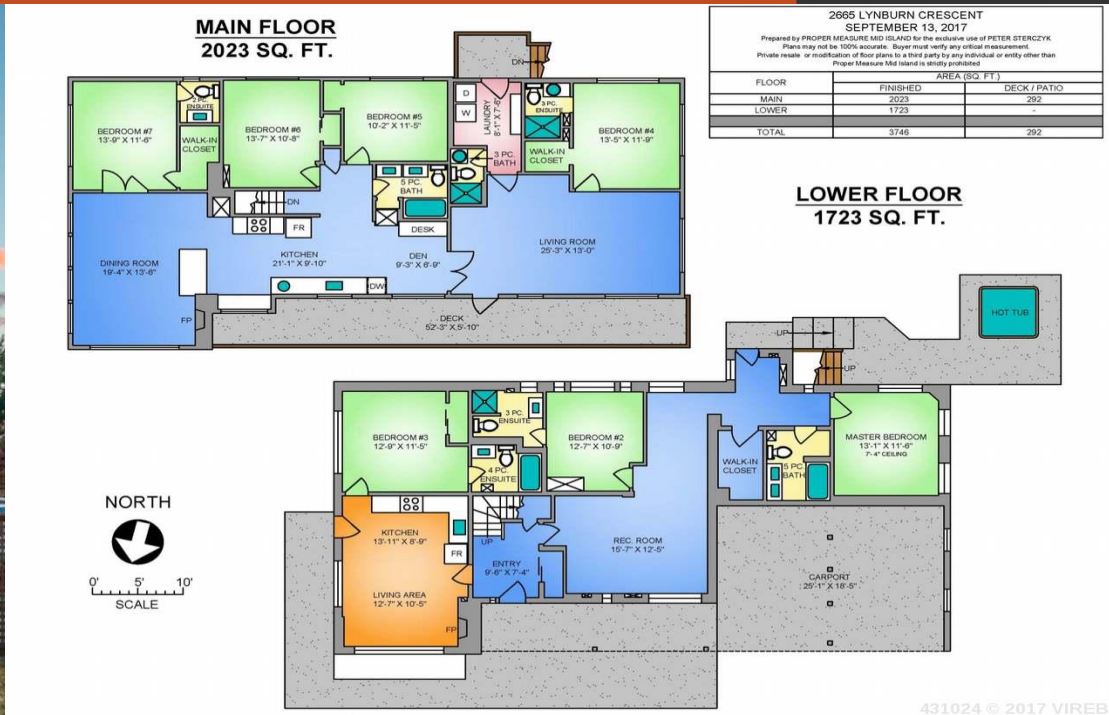
Peter Sterczyk
RE/MAX Of Nanaimo

(250) 816-7325
#1 - 5140 Metral Drive
petersterczyk@gmail.com
<http://www.nanaimo-realestate.com>

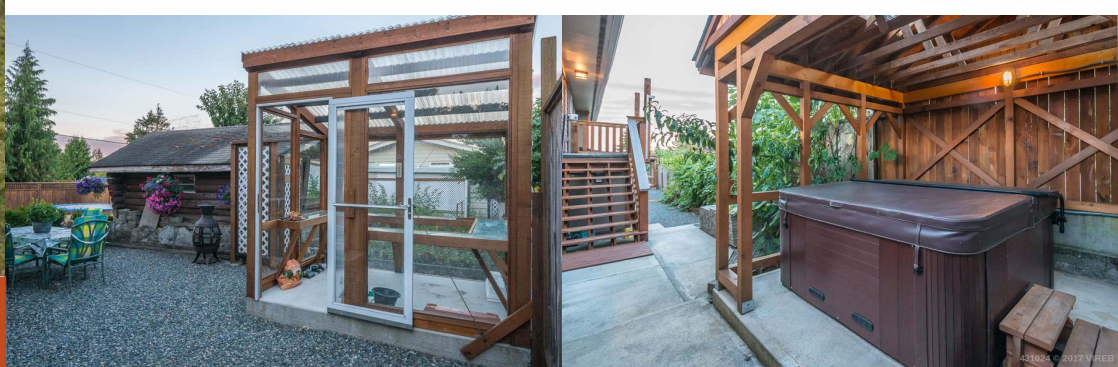


2665 Lynburn Cres

Bed & Breakfast



2665 Lynburn Cres



Overlooking Departure Bay in one of Nanaimo's most desirable neighbourhoods, this modernized Lynburn Classic is equally as impressive both inside and out. The floor plan was updated to feature 7 bedrooms, 7 bathrooms (5 are ensuites), and a 1 bedroom suite. Adding to the comfort is a natural gas high efficiency radiant in-floor heating system, twin 50 gallon hot water tanks, and new roof with 11 skylights. The quality finishing carries through to the polished concrete & triple gauge hardwood floors, real wood cabinets, stainless steel appliances, and brushed nickel accents. Outside the livability continues with a gazebo covered hot tub, a log cabin detached workshop, veggie gardens, and 12 fruit trees. The large corner lot is fully fenced and provides ample parking for extended family or guests. Come explore the several living arrangement options!



Peter Sterczyk
RE/MAX Of Nanaimo

(250) 816-7325
#1 - 5140 Metral Drive
petersterczyk@gmail.com
<http://www.nanaimo-realestate.com>