

10161 Youbou Rd

\$475,000

CHARMING HOME WITH POTENTIAL

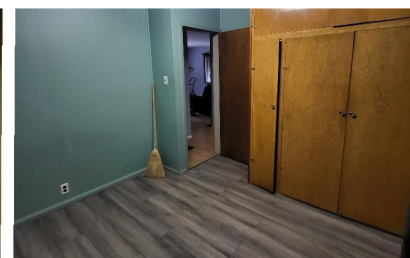
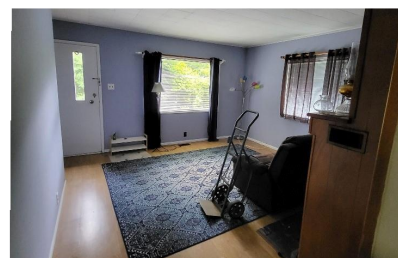


LAKE GLIMPSES

Charming house on a hill featuring two bedrooms and one bathroom, situated on a 0.63-acre lot. The property includes a spacious unfinished basement with a garage door, offering excellent potential for a workshop. The upper floor is easily accessible via a level entry. Additional features include a newer metal roof, a fireplace, and glimpses of the lake. The backyard is treed and includes a garden. The driveway is shared with a neighbor. The home also has a newer oil tank. Economical living in a desirable recreational area!

FEATURES

Area	Youbou
Bedrooms	2
Bathrooms	1
Lot Size	29185
Floor Space	728
Age	1965
Taxes	2850
Tax Year	2023
MLS#	968819
Parking	



Pat Miller

Realtor/Owner

P. (250) 920.9690
patrick@countrywiderealty.ca
pembertonholmeslakecowichan.com

Po Box 45, 145 South Shore Rd



**PEMBERTON
HOLMES** REAL ESTATE
ESTABLISHED 1887