



1500 Chilco Rd

\$890,000



Oceanview Crofton Acreage w/Overheight Shop

Situated on a private, partially treed & sunny 1.6 acre parcel, this lovingly maintained, main level entry home boasts ocean views & has something for everyone. Offering 3 bdrms, 2 baths & a generous family room in 2,276 Sq. Ft. of functional living space, this home has seen numerous upgrades & updates. Just a few features include efficient heat pump, woodstove, open concept living areas, newly renovated main bath, separate master suite w/more views, large covered deck for year round enjoyment & much more. There is a detached overheight 967 Sq. Ft. garage/workshop, overheight carport & regular carport, as well as RV parking w/hook ups. There's plentiful gardens, fruit trees & natural forest areas & even a fire pit complete w/pizza oven. This property is a value packed investment w/potential to subdivide (buyer to verify). All located a short drive to amenities, steps to trails & Maple Mountain & yet surrounded by nature so you feel a world away. If you want it all, you've found home.

SPECS & FEATURES

Area	Crofton	Age	1962
Bedrooms	3	Taxes	4704
Bathrooms	2	Tax Year	2021
Lot Size	1.6 Acres	MLS#	901989
Floor Space	2134	Parking	Garage,Carport, RV



To view interactive floor plans scan this QR code with your smart phone



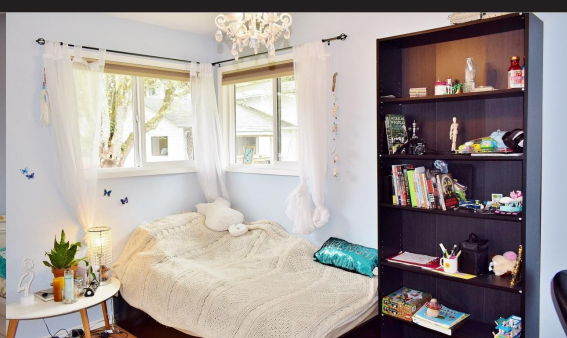
JOHANNSEN GROUP REALTY INC

www.jgrealty.ca

Theresa Carter - Realtor

250-748-8080
Toll Free 1-888-748-8088
theresa@jgrealty.ca

1500 Chilco Rd



JOHANNSEN GROUP REALTY INC
www.jgrealty.ca
Theresa Carter - Realtor

250-748-8080
Toll Free 1-888-748-8088
theresa@jgrealty.ca

