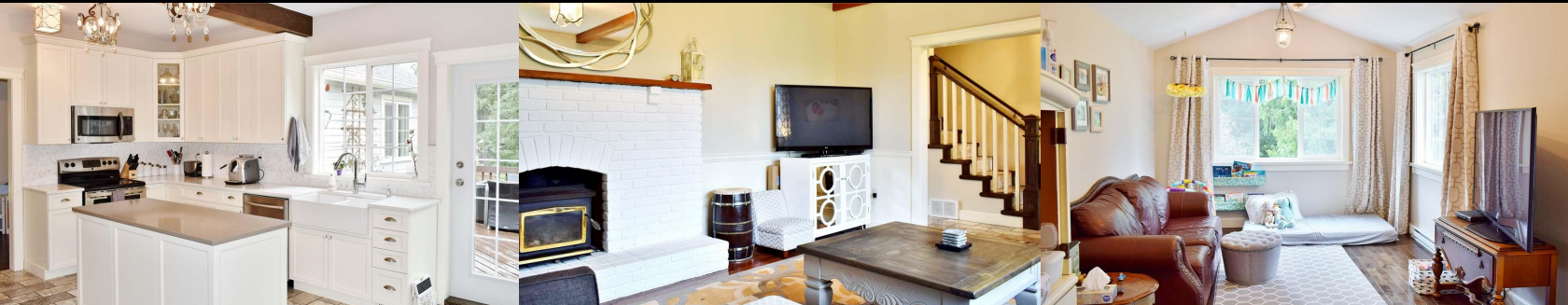




# 2351 Regina Drive

\$719,900



## Countryman Estates Family Home w/ Suite

Recently remodeled, including a developed self-contained 1 bedroom suite over the garage, this unique gambrel roof designed 2 level home also has a part basement. The main home is 2 or 3 bedrooms and 2.5 bathrooms plus one in the suite. Situated in popular Countryman Estates off Lakes Road, the 0.67 acre beautifully landscaped corner lot is nicely treed for privacy and shade and there's a magnificent old growth tree that graces the entry to this fine home too. The home has a heat pump, thermal windows, woodstove and has also had an Energuide energy audit. The upgraded kitchen is to die for and there are beautiful travertine tile floors and complementary wood floors too. The formal dining room and casual family space as well as office and big entertainment sized BBQ deck are sure to please your family. This is a classy home in a great neighbourhood and a rare offering in today's market.

### SPECS & FEATURES

Area	Z3 East Duncan	Age	1910
Bedrooms	4	Taxes	\$4,634
Bathrooms	4	Tax Year	2017
Lot Size	0.67 Acre	MLS#	437868
Floor Space	3,209 Sq. Ft.	Parking	Garage - Double



To view interactive floor plans scan this QR code with your smart phone

### Johannsen Group

RE/MAX of Duncan

Each office is independently owned and operated

(250) 748-8080 or (250) 743-5151

Toll Free: 1-888-748-8088

mail@kimjohannsen.com

http://www.kimjohannsen.com



JOHANNSEN  
REALTY GROUP  
We Sell The Country. You'll Love It.