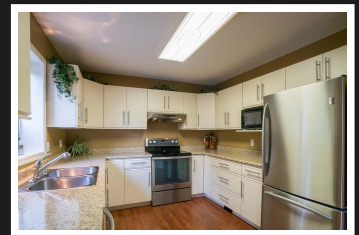
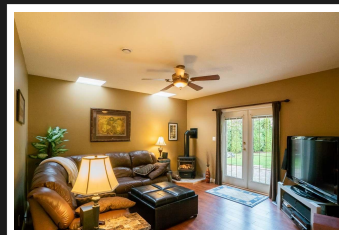
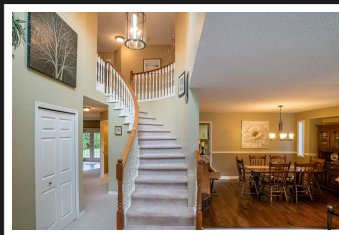
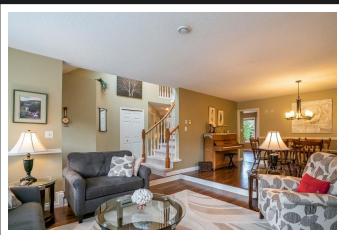


PEMBERTON
HOLMES

· ESTABLISHED 1887 ·

HOMES & GARDEN SPECIAL

559 Hooper Place

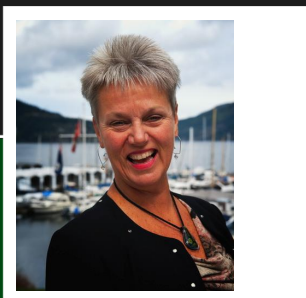


559 Hooper Place, Ladysmith, B. C.

This quiet serene location, nestled at the end of a quiet cul de sac, is a Homes and Gardens special. Level lot, landscaped with an abundance of privacy, extra wide driveway, RV parking. Built as a custom home, impressive grand vaulted foyer entrance, circular stairs to upstairs, spacious open main living & dining features gas fireplace, finished with rich quality hardwood floors throughout the main & large kitchen, with walk-in pantry, and eating nook, open to large family room with a cozy gas fireplace tucked in the corner, patio door, opens to a rear outdoor deck patio - stone area, a great summer outdoor location, perfect for the entire family, 3 bedrooms are on upper level, large master bedroom, with oversize walk in his/her closet, and a 4 piece master ensuite, and beautiful bonus room over garage, ideal for office, or media room. Great floor plan that offers many lifestyle options.

Priced at
\$649,900

| | | | |
|-------------|--------------|----------|------------|
| Area | Z3 Ladysmith | Age | 1991 |
| Bedrooms | 4 | Taxes | 4222 |
| Bathrooms | 3 | Tax Year | 2018 |
| Lot Size | 0.28 | MLS# | 447839 |
| Floor Space | 2480 | Parking | 2 Garage - |



HELENA BOWEN

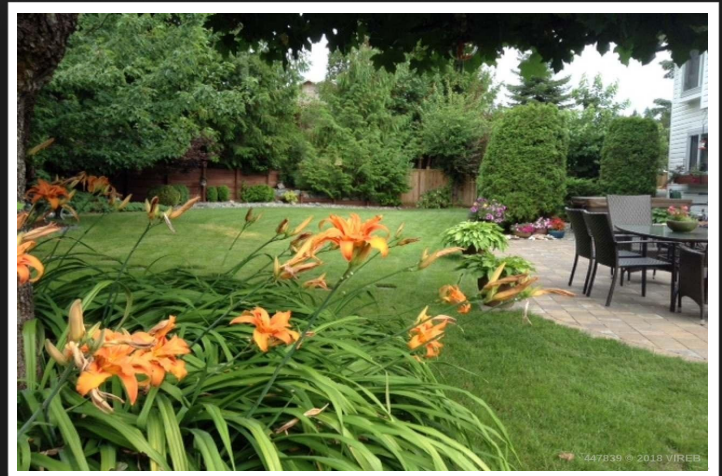
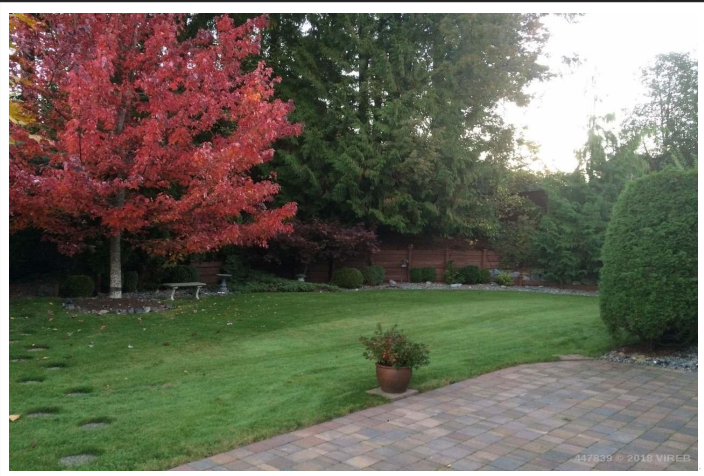
Pemberton Holmes - Duncan

Scan this QR
Code with your
smart phone



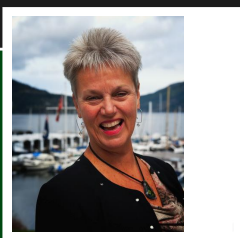
(250) 746-8123
helenab@telus.net
www.ladysmithrealestate.ca

23 Queens Road
Duncan, V9L 2W1



559 Hooper Place

This quiet serene location, nestled at the end of a quiet cul de sac, is a Homes and Gardens special. Level lot, landscaped with an abundance of privacy, extra wide driveway, RV parking. Built as a custom home, impressive grand vaulted foyer entrance, circular stairs to upstairs, spacious open main living & dining features gas fireplace, finished with rich quality hardwood floors throughout the main & large kitchen, with walk-in pantry, and eating nook, open to large family room with a cozy gas fireplace tucked in the corner, patio door, opens to a rear outdoor deck patio - stone area, a great summer outdoor location, perfect for the entire family, 3 bedrooms are on upper level, large master bedroom, with oversize walk in his/her closet, and a 4 piece master ensuite, and beautiful bonus room over garage, ideal for office, or media room. Great floor plan that offers many lifestyle options for the entire family. Don't miss out!



HELENA BOWEN

Pemberton Holmes - Duncan

(250) 210-0164
helenab@telus.net
www.ladysmithrealestate.ca

23 Queens Road
Duncan, V9L 2W1