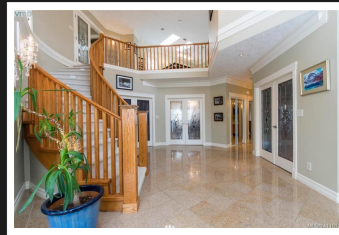
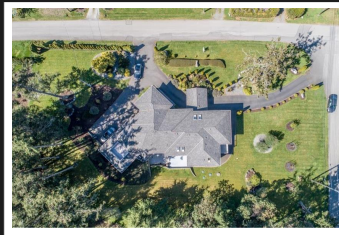


PEMBERTON  
HOLMES

· ESTABLISHED 1887 ·

# 4025 LOCKEHAVEN DRIVE

## 10 Mile Point

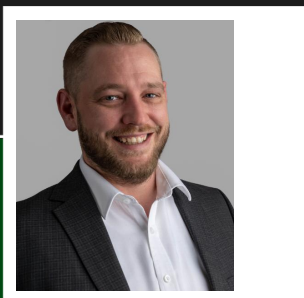


### 4025 Lockehaven Dr

WATER VIEWS! MOUNTAIN VIEWS! 10 Mile Point has everything you need for an active life style. So, bring your kayak, bikes and paddle boards! Only a few minutes drive from all major amenities, golf courses, hiking trails, and more. This stunning home is located on a corner lot only a 3 minute walk from the beach. With over 33,000 sqft of land, this custom built 5500 sqft home features 4 beds, 4 bathrooms, an amazing media room and a billiards area. The master wing is over 800sqft of breathtaking views of Telegraph Bay and the incredible cascade mountains. Enjoy your morning coffee or a glass of wine on your private master balcony. Don't miss your opportunity for a slice of serenity.

**Priced at**  
**\$2,850,000**

Area	Ten Mile Point	Age	2005
Bedrooms	4	Taxes	11974
Bathrooms	4	Tax Year	2018
Lot Size	0.77	MLS#	411972
Floor Space	5582		



**ROBERT COLE**

Pemberton Holmes - Cloverdale

Scan this QR  
Code with your  
smart phone



(250) 384-8124  
estatebyrobertcole@gmail.com  
rebyrobertcole.ca

150 - 805 Cloverdale Ave  
Victoria, V8X 2S9